

**OVL 142**  
X-Y-Z  
±6mm



## Mechanical Collision and Overload Protection Device

Type : OVL



## Distinction

- Compact design
- Low weight
- Low height
- Compensation in x, y and z-axis(±)
- Compensates and swivels in z-axis
- Simple assembly
- Individual fastening bores can be easily added
- No pneumatic connection necessary
- Through-hole

- 경량 구조
- 저 중량
- 낮은 높이
- x, y, z축의 보정
- 보정과 z축의 회전
- 간단한 조립구조
- 고정 Hole은 쉽게 추가 할수 있다.
- 원점 복귀
- 중심 관통 Hole

- ▶ Operating principle : spring packaged tapers
- ▶ Material : hard-coated aluminium
- ▶ Position of installation : application dependent
- ▶ Other sizes : on request

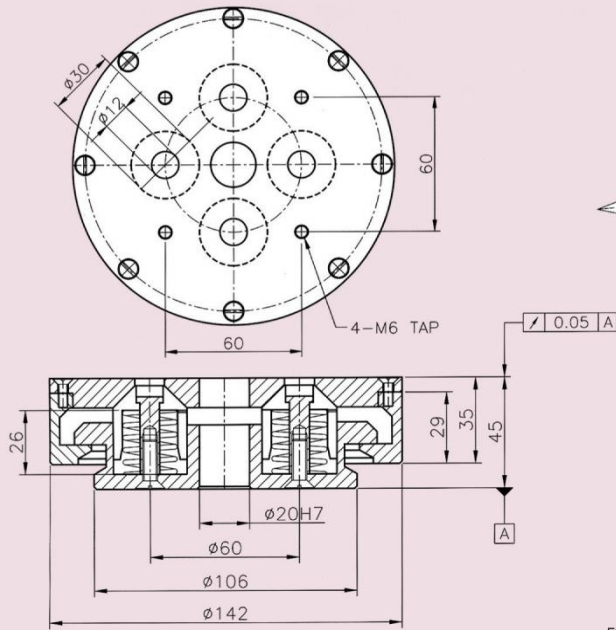
- ▶ 작동원리 : Spring을 이용한 충격 완화
- ▶ 재질 : AL(Hard-Coated)
- ▶ 설치위치 : 원하는 위치에 응용 설치 가능
- ▶ 다른 치수의 제품 : 주문시 제작 가능

**OVL 142**  
X-Y-Z  
±6mm

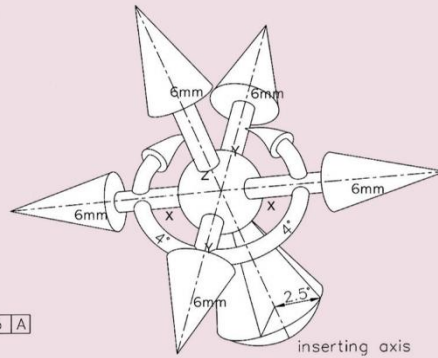
## Overload Protection OVL 142

Type	Max. comp. X-axis	Max. comp. Y-axis	Max. comp. Z-axis	Max. angular compensation X-axis	Max. angular compensation Y-axis	Max. angular compensation Z-axis	Mass	Repeatability
OVL 142	±6mm	±6mm	±6mm	2.5°	2.5°	8°	1.35kg	±0.1mm

### Dimension For OVL 142



### Compensation Movements



### Max. payload in direction of equalization

