

# Swivel & Gripper Units

PSG25E-64

0-180° / 3Nm

PSG34E-80

0-180° / 12Nm

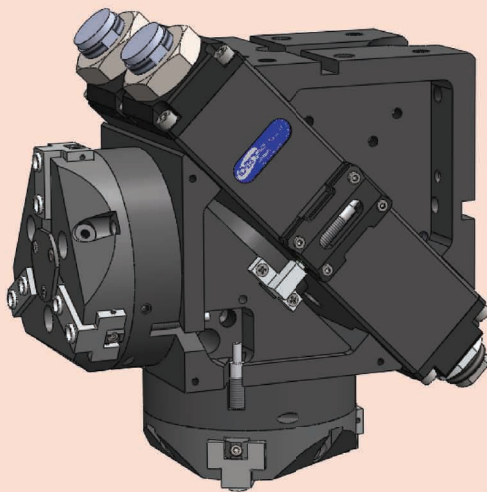
PSG40E-100

0-180° / 22Nm

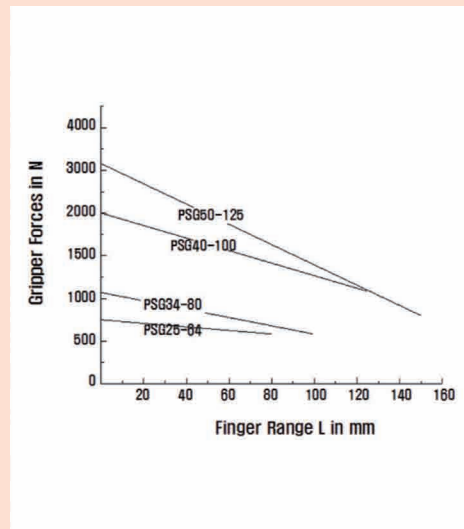
PSG50E-125

0-180° / 45Nm

Swivel Unit & Gripper Unit  
TYPE : PSG-E



<Gripper의 최대 파지력과 모멘트>



## Distinction

- Compact design-Swivel with Gripper
- High payload
- Integrated shock absorption of the end positions
- Swivelling angle from 0 to 180°
- Integrated, patented 5-fold energy supply without hoses
- Integrated feeding for up to 4 signals for proximity switches

- 소형, 경량 구조
- Swivel과 Gripper의 일체형 구조
- Double power system으로 고Torque 실현
- 강력한 Shockabsorber내장
- Sensor cable 및 Air 공급용 Hole의 내장으로 외부에 돌출되지 않음.
- 회전각도 : 0° ~ 180° (조정가능)

- ▶ Principle of operation : drive via synchronized double rack and pinion
- ▶ Material : housing is made of high-tensile, hard-coated aluminium alloy : functional parts are hardened steel
- ▶ Actuation : pneumatic, compressed air filtered(10μm), dry or lubricated
- ▶ Range of operating pressure : from 4.5 to 8bars
- ▶ Operating temperature : form 5° to 60℃(41°F to 140°F)
- ▶ Accessories : proximity switches, Spring-packaged pressure plate.

- ▶ 재질 : 몸체 AL(Hard-Coated)  
작동부위 Hardened Steel
- ▶ 구동원 : Pneumatic
- ▶ 사용압력 : 4.5~8bars
- ▶ 사용온도 : 5℃~60℃

# Swivel & Gripper Unit

**PSG25E-64**

0-180° / 3Nm

**PSG34E-80**

0-180° / 12Nm

**PSG40E-100**

0-180° / 22Nm

**PSG50E-125**

0-180° / 45Nm

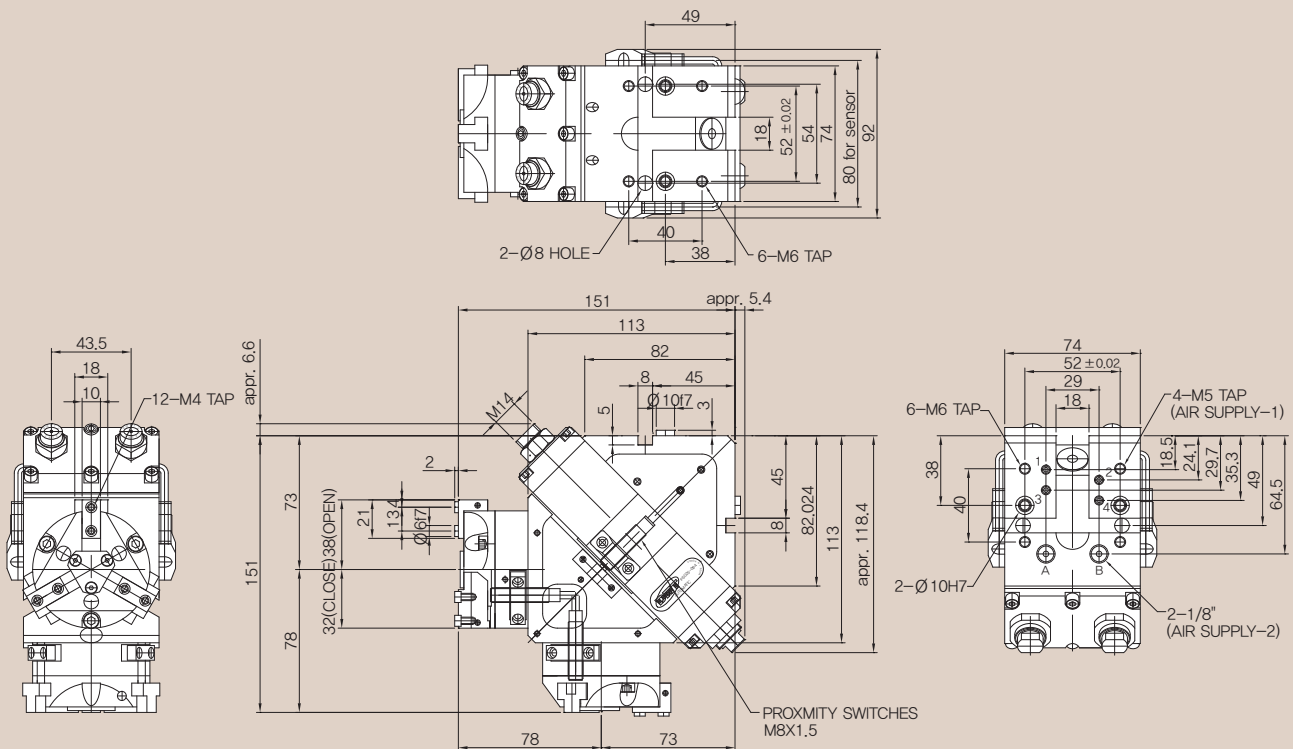
## Swivel & Gripper Units

Type	*Torque	No. of air feed ports	Axial bearing load	Radial bearing load	Air consump. for 1×180°	Cycle time (1×180° without load)	Mass	Mass moment of inertia	*Repeat ability
PSG25E-64	3Nm	4	600N	10.4Nm	22cm <sup>3</sup>	0.3s	3.2kg	90kg	0.1°
	Stroke per Finger	*Gripping force at 6bars	*Workpiece weight (recom.)	Air consump. per double stroke	Opening time	Closing time	Repeat ability	Max finger length	
	6mm	580N	3kg	25cm <sup>3</sup>	0.01s	0.01s	0.01mm	64mm	

\* Control of end positions, in relation to the base body, after 100 consecutive swivelling cycles.

\*\* Actuation piston double-acting.

### Dimension for PSG25E-64



# Swivel & Gripper Unit

**PSG25E-64**  
0-180° / 3Nm

**PSG34E-80**  
0-180° / 12Nm

**PSG40E-100**  
0-180° / 22Nm

**PSG50E-125**  
0-180° / 45Nm

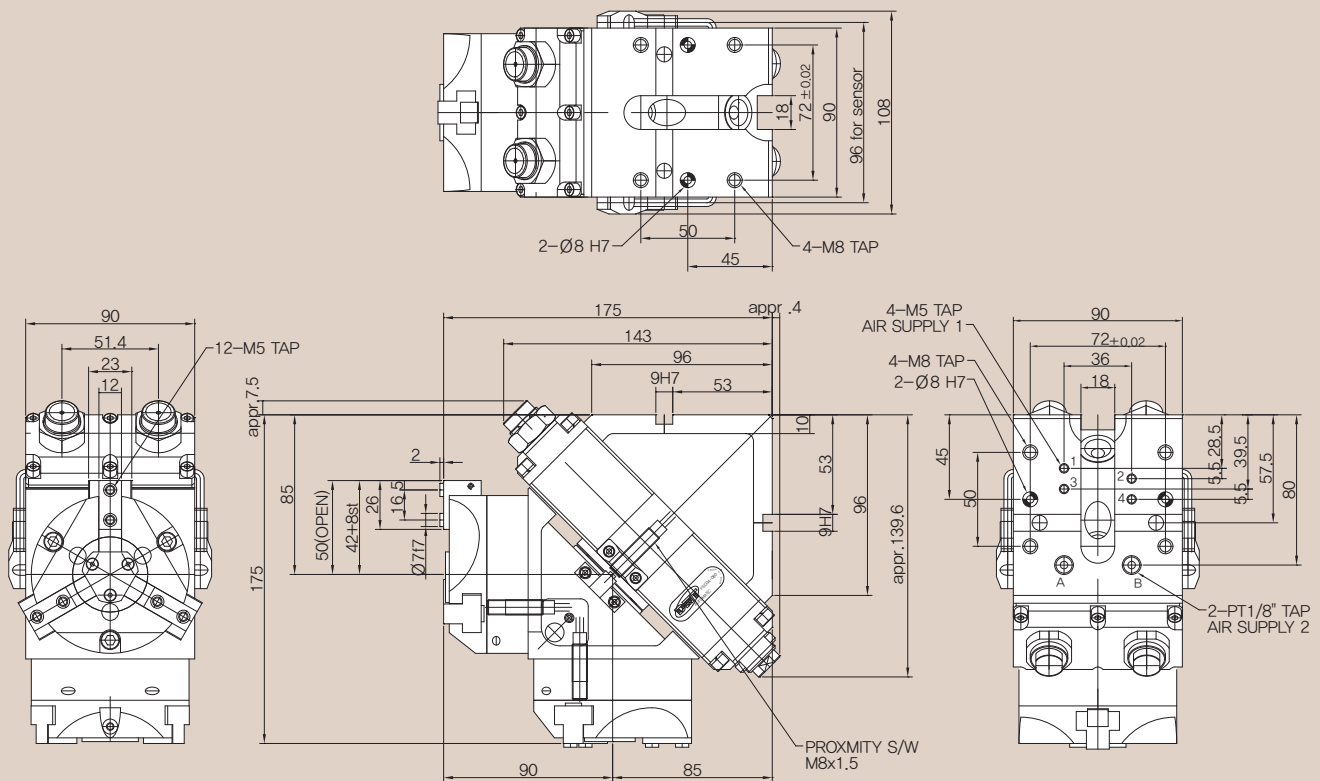
## Swivel & Gripper Unit

Type	** Torque	No. of air feed ports	Axial bearing load	Radial bearing load	Air consump. for 1×180°	Cycle time (1×180° without load)	Mass	Mass moment of inertia	*Repeat ability
PSG34E-80	12Nm	5	750N	15.4Nm	35cm <sup>3</sup>	0.4s	5.2kg	155kg cm <sup>3</sup>	0.1°
	Stroke per Finger	*Gripping force at 6bars	* Workpiece weight (recom.)	Air consomp. per double stroke	Opening time	Closing time	Mass moment of inertia	Repeat ability	Max finger length
	8mm	1000N	6.0kg	60cm <sup>3</sup>	0.05s	0.06s	19kg cm <sup>3</sup>	0.01mm	80mm

\* Control of end positions, in relation to the base body, after 100 consecutive swivelling cycles.

\*\* Actuation piston double-acting.

## Dimension for PSG34E-80



# Swivel & Gripper Unit

PSG25E-64

0-180° / 3Nm

PSG34E-80

0-180° / 12Nm

**PSG40E-100**

0-180° / 22Nm

PSG50E-125

0-180° / 45Nm

## Swivel & Gripper Unit

Type	* Torque	No. of air feed ports	Axial bearing load	Radial bearing load	Air consump. for 1×180°	Cycle time (1×180° without load)	Mass	Mass moment of inertia	*Repeat ability
PSG40E-100	22Nm	4	1300N	63Nm	252cm <sup>3</sup>	0.8s	9kg	240kg cm <sup>3</sup>	0.1°
	Stroke per Finger	*Gripping force at 6bars	Workpiece weight (recom.)	Air consomp. per double stroke	Opening time	Closing time	Mass moment of inertia	Repeat ability	Max finger length
	10mm	1800N	10kg	120cm <sup>3</sup>	0.07s	0.08s	41kg cm <sup>3</sup>	0.01mm	100mm

\* Control of end positions, in relation to the base body, after 100 consecutive swivelling cycles.

\*\* Actuation piston double-acting.

## Dimension for PSG40E-100

