

ROS 025

0-90°
1Nm

ROS 040

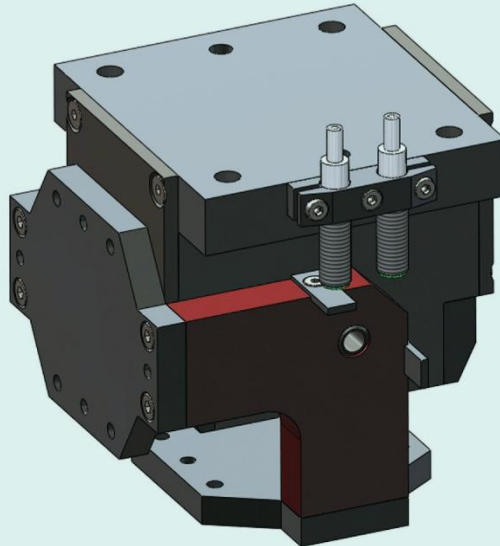
0-90°
5Nm

ROS 050

0-90°
8Nm

Swivel Head

TYPE : ROS



Distinction

- Compact design
- Rectangular rotary units to be able to rotate two grippers rectangularly mounted unit
- Swivel angle monitoring using proximity switch
- Swivel angle from 0 to 90°

- 소형, 경량 구조
- 2개의 Gripper를 90°로 취부하여 회전시키는 직교차 회전 유니트
- 근접센서를 이용한 회전각도 감지
- 회전각도 : 0°~90°

- ▶ Principle of operation : drive via synchronized double rack and pinion
- ▶ Material : housing is made of high-tensile, hard-coated aluminium alloy ; functional parts are hardened steel
- ▶ Actuation : pneumatic, compressed air filtered(10μm), dry or lubricated
- ▶ Range of operating pressure : from 4.5 to 8bars
- ▶ Operating temperature : form 5° to 60℃(41°F to 140°F)
- ▶ Accessories : proximity switches, Spring-packaged pressure plate.

- ▶ 재질 : 몸체 AL(Hard-Coated)
작동부위 Hardened Steel
- ▶ 구동원 : Pneumatic
- ▶ 사용압력 : 4.5~8bars
- ▶ 사용온도 : 5℃~60℃

ROS 025
1Nm

ROS 040
5Nm

ROS 050
8Nm

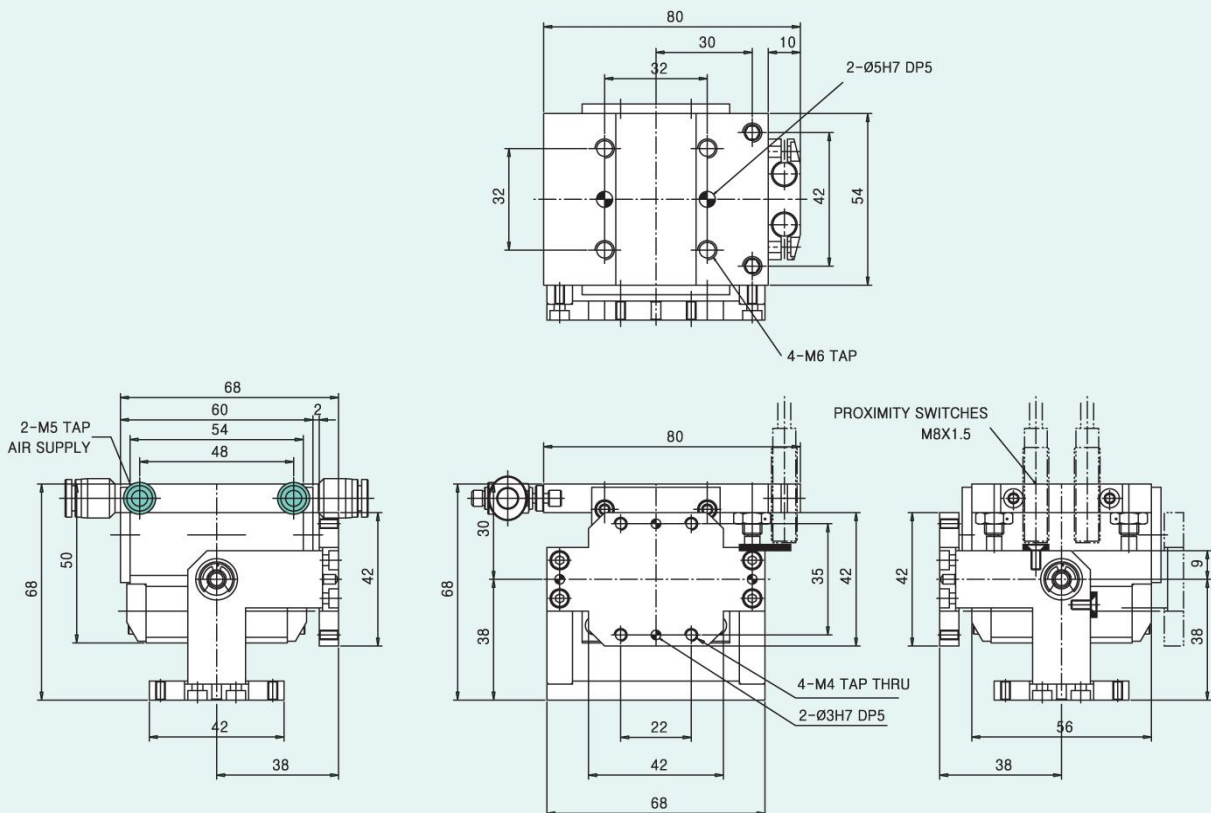
90° Swivel Units ROS 025

Type	**Torque	Air consumption for 90°	Cycle time for 90°	Mass	Mass moment of inertia	max. bending moment	*Repeat ability
ROS 025	1Nm	12cm ³	1s	0.5kg	2kg cm ²	22Nm	0.05°

* Control of end positions, in relation to the base body, after 100 consecutive swivelling cycles.

** Actuation piston double-acting.

Dimension for ROS 025



ROS 025
1Nm

ROS 040
5Nm

ROS 050
8Nm

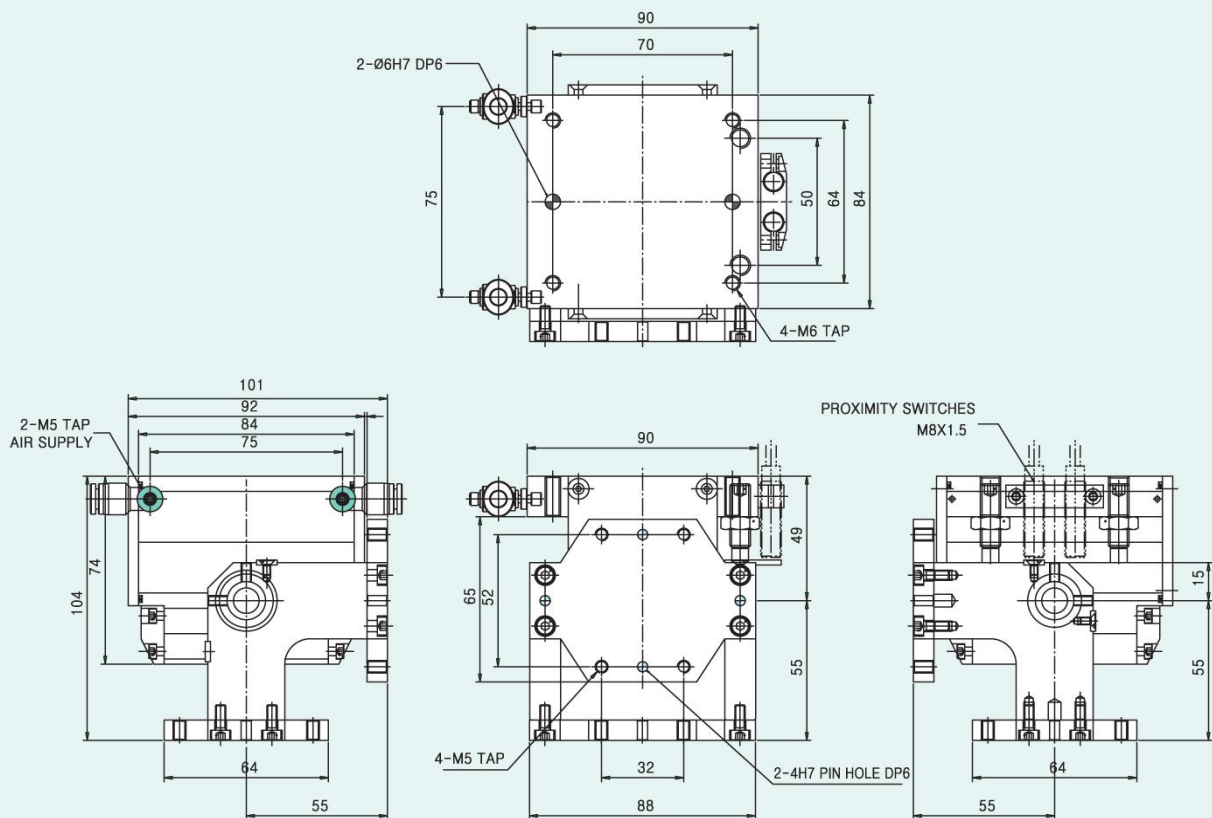
90° Swivel Units ROS 040

Type	**Torque	Air consumption for 90°	Cycle time for 90°	Mass	Mass moment of inertia	max. bending moment	*Repeat ability
ROS 040	5Nm	50cm ³	1s	1kg	12kg cm ²	90Nm	0.1°

* Control of end positions, in relation to the base body, after 100 consecutive swivelling cycles.

** Actuation piston double-acting.

Dimension for ROS 040



ROS 025
1Nm

ROS 040
5Nm

ROS 050
8Nm

90° Swivel Units ROS-050

Type	**Torque	Air consumption for 90°	Cycle time for 90°	Mass	Mass moment of inertia	max. bending moment	*Repeat ability
ROS 050	8Nm	70cm ³	1s	1.7kg	38kg cm ²	128Nm	0.1°

* Control of end positions, in relation to the base body, after 100 consecutive swivelling cycles.

** Actuation piston double-acting.

Dimension for ROS 050

