

PLE32-50
2×50mm
800N

PLE32-100
2×100mm
800N

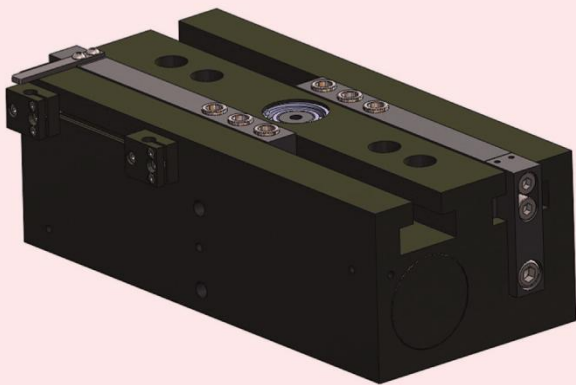
PLE50-50
2×50mm
1900N

PLE50-100
2×100mm
1900N

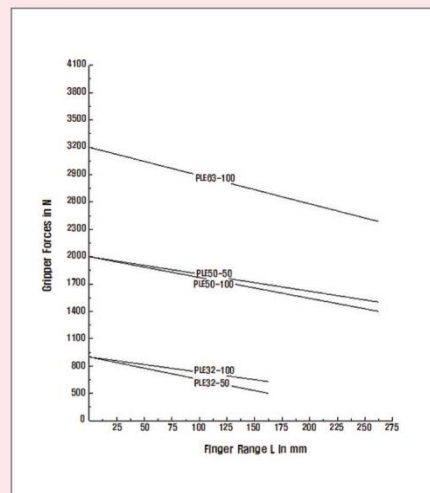
PLE63-100
2×100mm
3100N

2-Finger-Long-Gripper

TYPE : PLE



< Gripper의 최대 파지력과 모멘트 >



Distinction

- Long stroke
- Small, Compact design
- Suitable for I.D and O.D. gripping
- Strong gripping force
- Excellent repeatability
- Very reliable
- Stroke monitoring Using proximity switch
- Robust slideway suitable for high torques
- Universal connection

- 긴 Stroke
- 소형, 경량 구조
- 외경과 내경을 단단히 잡는 구조
- 강한 파지력
- 우수한 반복성
- 높은 신뢰성
- 근접 Sensor를 이용한 Stroke 감지
- 높은 토크에 적합한 강한 슬라이드 면
- 보편적인 접속 형식

- ▶ Operating principle : drive via synchronized double rack and pinion
- ▶ Material : housing is made of high-tensile, hard-coated aluminium alloy ; functional parts are hardened steel
- ▶ Operating : pneumatic
- ▶ Operating pressure range : 4.5 to 8 bars
- ▶ Installation : in various position
- ▶ Parts supplied : brackets for proximity switch, position pin O-ring

- ▶ 작동원리 : 랙, 피니언 구동 방식
- ▶ 재질 : 몸체 AL(Hard-Coated)
작동부위 Hardened Steel
- ▶ 구동원 : 공기압
- ▶ 사용압력 : 4.5~8bars
- ▶ 설치 : 다양한 위치 설치 가능
- ▶ 공급부품 : 센서 고정판, 위치 고정 Pin O-ring

2-Finger-Long-Grippers

PLE32-50
2 × 50mm
800N

PLE32-100
2 × 100mm
800N

PLE50-50
2 × 50mm
1900N

PLE50-100
2 × 100mm
1900N

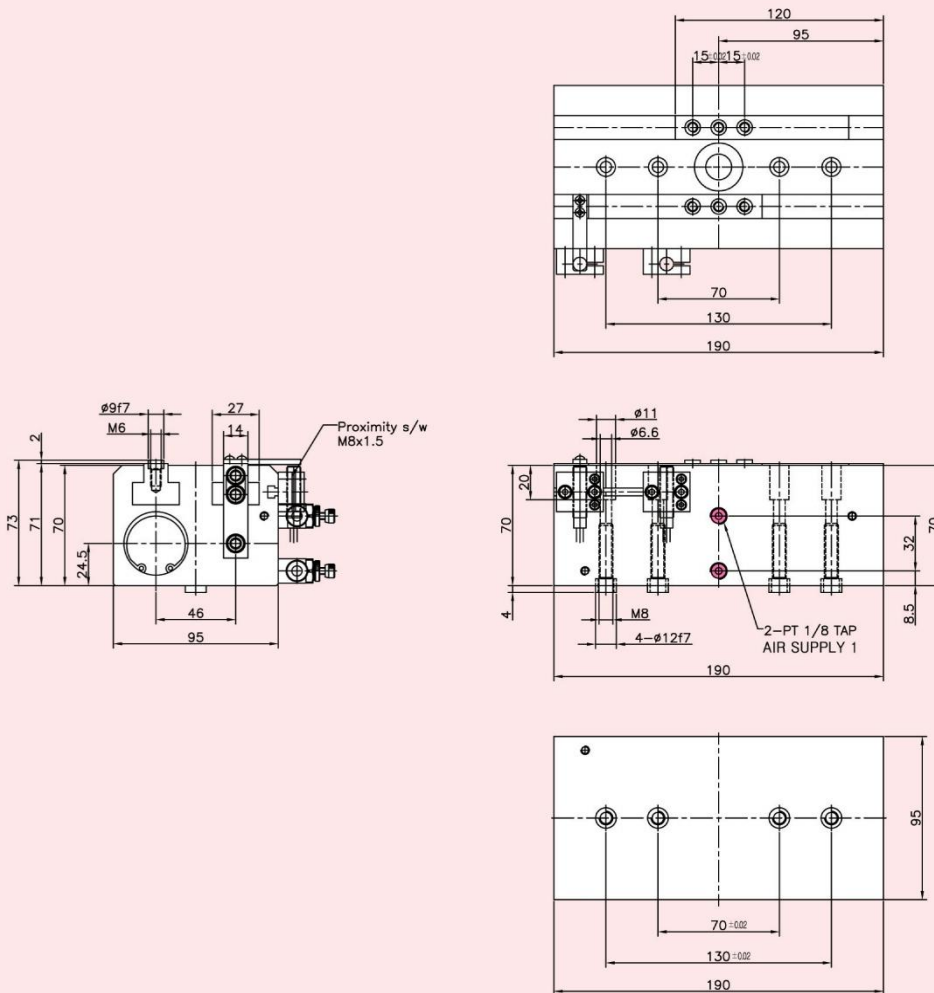
PLE63-100
2 × 100mm
3100N

2-Finger-Long-Grippers PLE32-50

Type	Stroke per finger	*Gripping force at 6 bars	*Workpiece weight (recom.)	Air consump. per doublestroke	Opening time	Closing time	Mass	Mass moment of inertia	Repeat ability	Max. Finger length
PLE32-50	50mm	800N	4kg	160cm ³	0.5s	0.5s	3.7kg	124kg cm ³	0.04mm	100mm

* Gripping force = arithmetic sum of the individual forces occurring at the fingers, distance "P" at 6 bars.

Dimension for PLE32-50



2-Finger-Long-Grippers

PLE32-50
2 × 50mm
800N

PLE32-100
2 × 100mm
800N

PLE50-50
2 × 50mm
1900N

PLE50-100
2 × 100mm
1900N

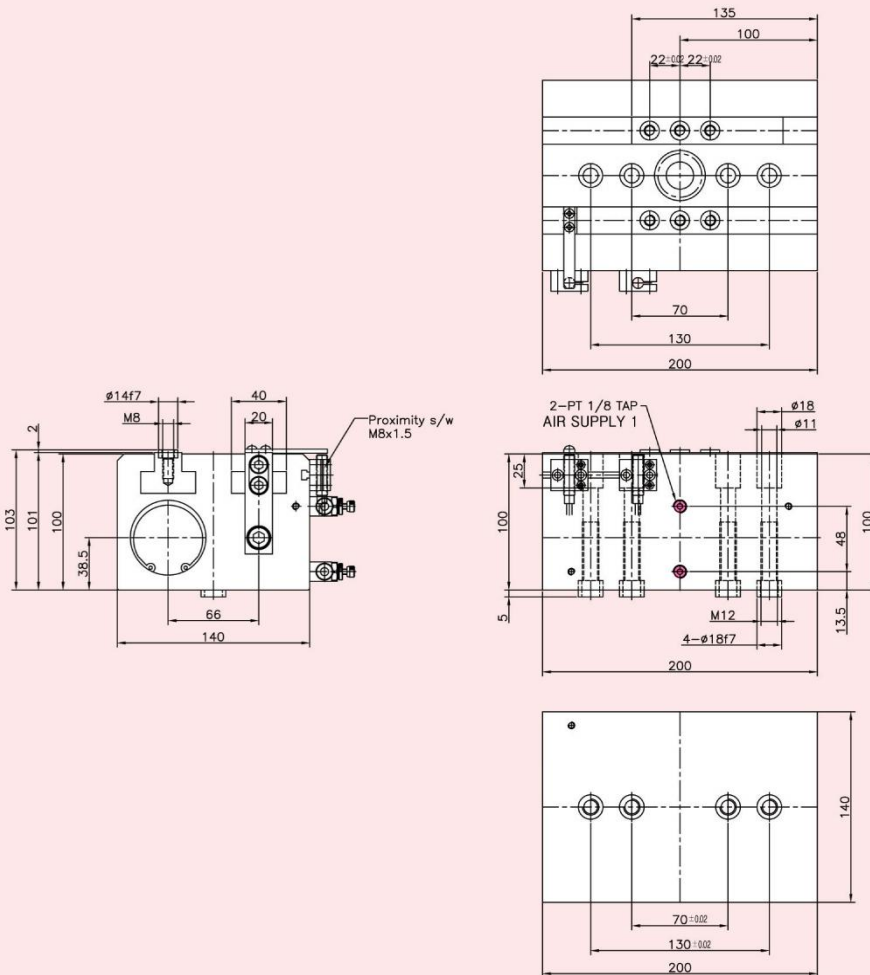
PLE63-100
2 × 100mm
3100N

2-Finger-Long-Grippers PLE50-50

Type	Stroke per finger	*Gripping force at 6 bars	*Workpiece weight (recom.)	Air consump. per doublestroke	Opening time	Closing time	Mass	Mass moment of inertia	Repeat ability	Max. Finger length
PLE50-50	50mm	1900N	9.5kg	390cm ³	0.5s	0.5s	8.5kg	433kg cm ³	0.04mm	200mm

* Gripping force = arithmetic sum of the individual forces occurring at the fingers, distance "P" at 6 bars.

Dimension for PLE50-50





2-Finger-Long-Grippers

PLE32-50
2 × 50mm
800N

PLE32-100
2 × 100mm
800N

PLE50-50
2 × 50mm
1900N

PLE50-100
2 × 100mm
1900N

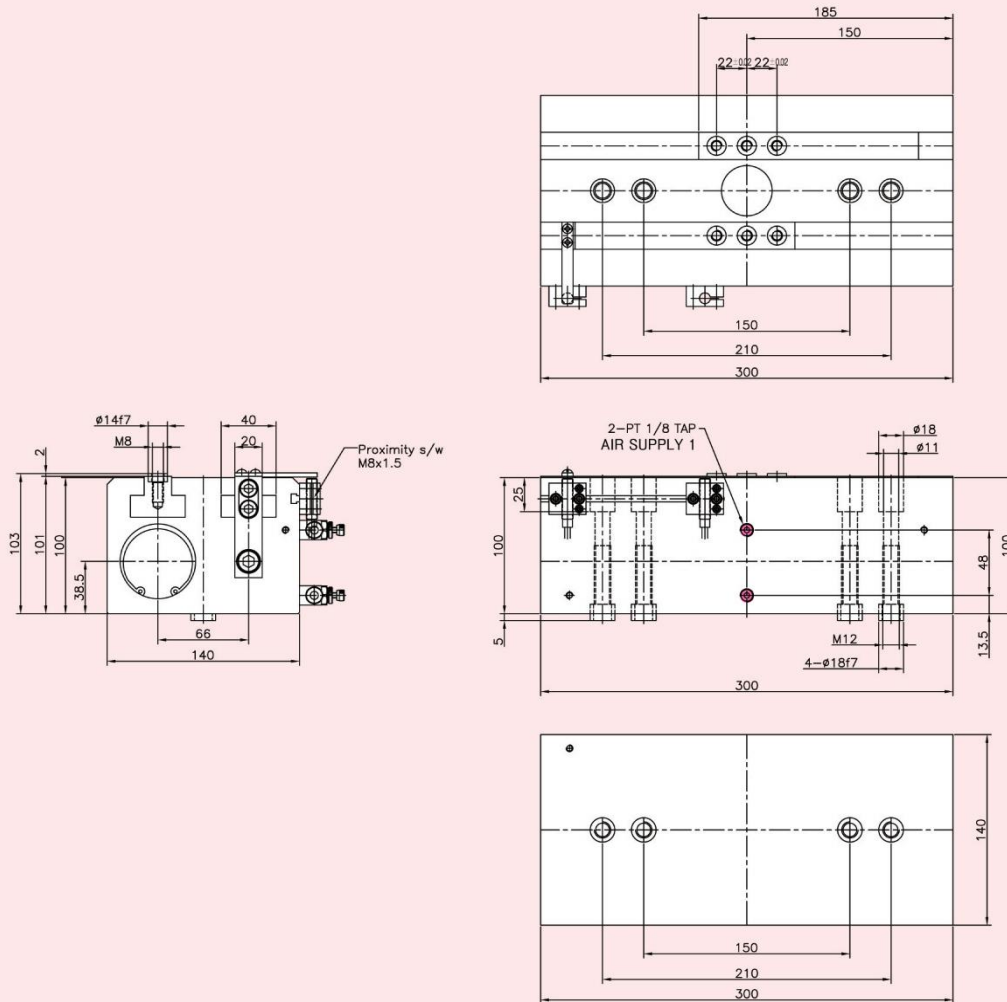
PLE63-100
2 × 100mm
3100N

2-Finger-Long-Grippers PLE50-100

Type	Stroke per finger	*Gripping force at 6 bars	*Workpiece weight (recom.)	Air consump. per doublestroke	Opening time	Closing time	Mass	Mass moment of inertia	Repeat ability	Max. Finger length
PLE50-100	100mm	1900N	9.5kg	780cm ³	0.9s	0.9s	10.9kg	720kg cm ³	0.04mm	200mm

* Gripping force = arithmetic sum of the individual forces occurring at the fingers, distance "P" at 6 bars.

Dimension for PLE50-100



2
F
I
N
G
E
R

