

**D3PG100**  
2×10mm  
1800N

**D3PG125**  
2×13mm  
3100N

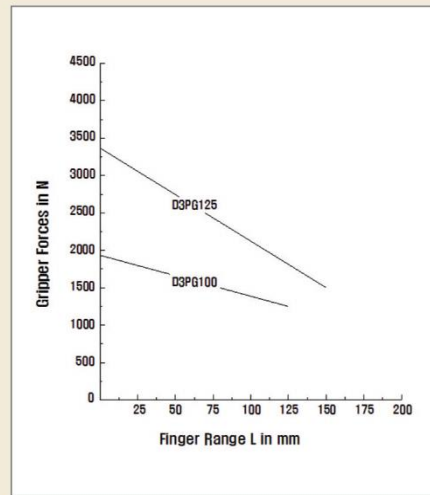
**D3PG160**  
2×16mm  
6000N

## 3-Finger-Centric-Double-Gripper

TYPE : D3PG



< Gripper의 최대 파지력과 모멘트 >



## Distinction

- Compact design(2Finger double turn gripper)
- High gripping force
- High reliability and long life
- Suitable for O.D and I.D gripping
- For robot application

- 소형, 경량 구조(3개 Gripper의 일체형)
- 높은 파지력
- 높은 신뢰성과 긴 수명
- 내경과 외경을 잡기 적합한 구조
- 다관절 로봇 및 Servo제어에 적합

3  
F  
I  
N  
G  
E  
R

- ▶ Principle of operation : over wedges mechanically restricted guidance, transmission of force through surfaces
- ▶ Material : housing is made of high-tensile, hard-coated aluminium alloy ; functional parts are made of hardened steel
- ▶ Actuation : pneumatic, compressed air filtered(10 $\mu$ m), dry or lubricated
- ▶ Range of operating pressure : from 2 to 8bars
- ▶ Operating temperature : form 5 $^{\circ}$  to 60 $^{\circ}$ C(41 $^{\circ}$ F to 140 $^{\circ}$ F)
- ▶ Accessories : proximity switches, flexible positioning sensor, finger blocks, Spring-packaged pressure plate.

- ▶ 작동원리 : 쇄기형, 평형개폐형
- ▶ 재질 : 몸체 AL(Hard-Coated)  
작동부위 Hardened Steel
- ▶ 구동원 : Pneumatic
- ▶ 사용압력 : 2~8bars
- ▶ 사용온도 : 5 $^{\circ}$ ~60 $^{\circ}$ C



# 3-Finger-Double-Grippers

**D3PG100**  
2×10mm  
1800N

**D3PG125**  
2×13mm  
3100N

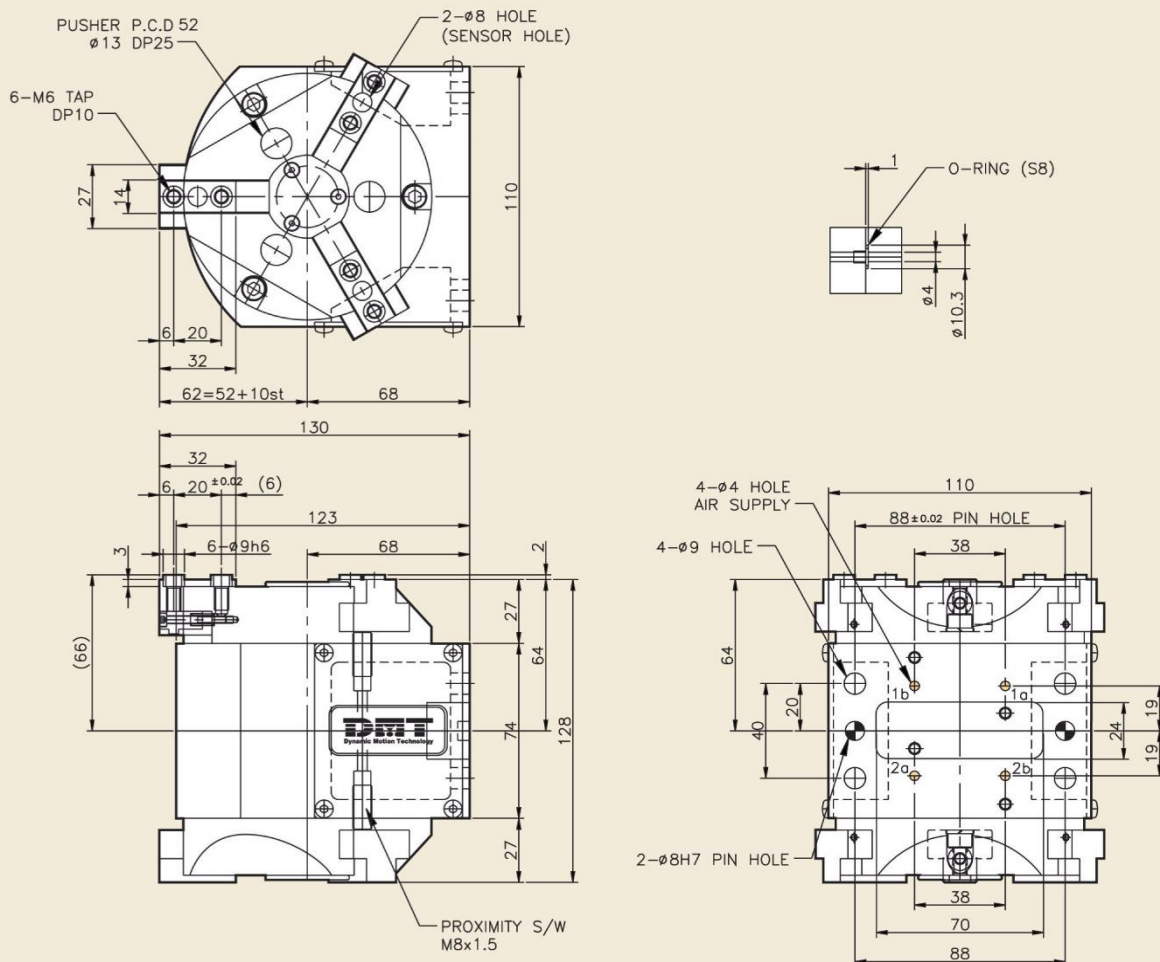
**D3PG160**  
2×16mm  
6000N

## 3-Finger-Double-Gripper D3PG100

Type	Stroke per finger	*Gripping force at 6 bars	*Workpiece weight (recom.)	Air consump. per doublestroke	Opening time	Closing time	Mass	Mass moment of inertia	Repeat ability	Max. Finger length
D3PG100	10mm	1800N	10kg	120cm <sup>3</sup>	0.07s	0.08s	3.1kg	41kg cm <sup>2</sup>	0.01mm	100mm

\* Gripping force = arithmetic sum of the individual forces occurring at the fingers, distance "P" at 6 bars.

### Dimension for D3PG100





# 3-Finger-Double-Grippers

**D3PG100**  
2×10mm  
1800N

**D3PG125**  
2×13mm  
3100N

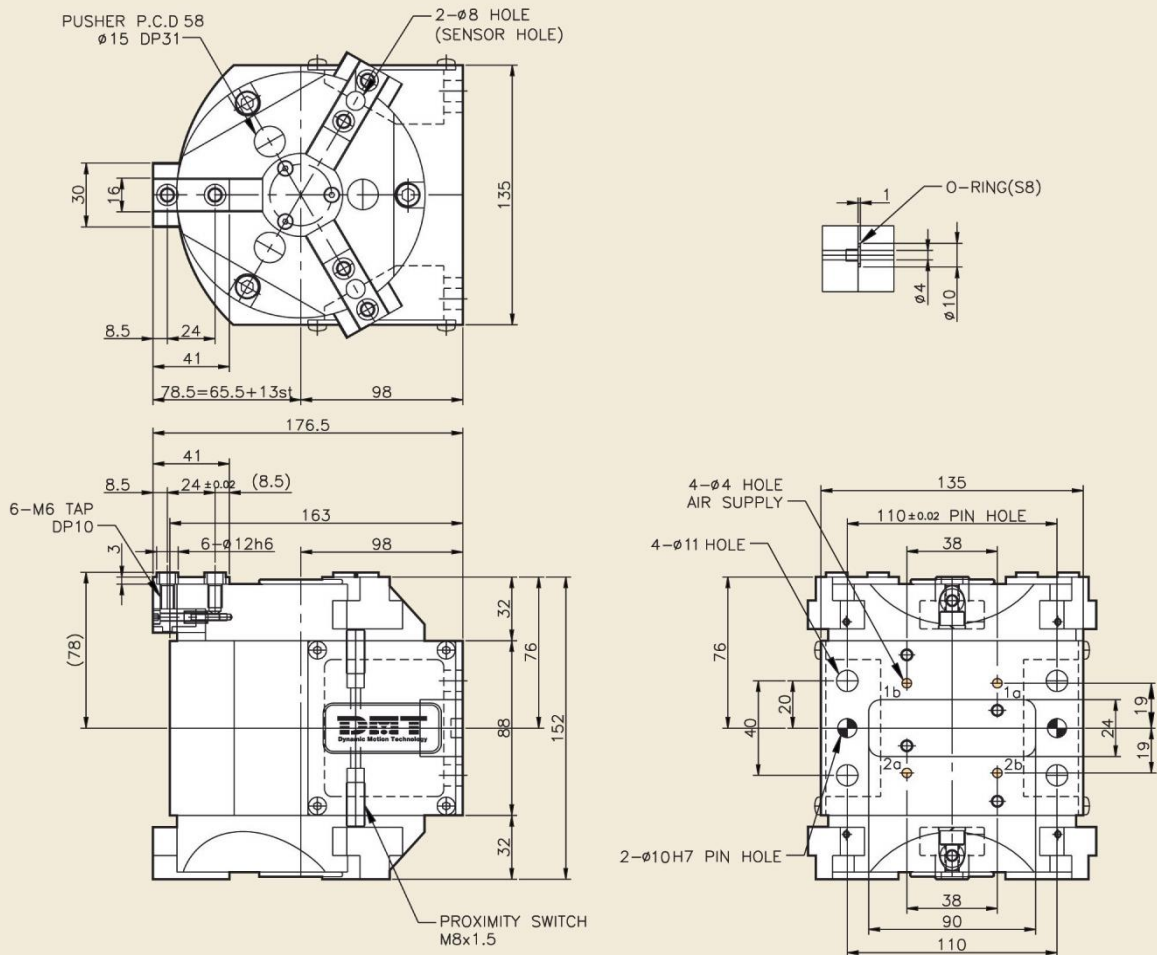
**D3PG160**  
2×16mm  
6000N

## 3-Finger-Double-Gripper D3PG125

Type	Stroke per finger	*Gripping force at 6 bars	*Workpiece weight (recom.)	Air consump. per doublestroke	Opening time	Closing time	Mass	Mass moment of inertia	Repeat ability	Max. Finger length
D3PG125	13mm	3100N	15.5kg	230cm <sup>3</sup>	0.17s	0.17s	5.4kg	97kg cm <sup>2</sup>	0.051mm	125mm

\* Gripping force = arithmetic sum of the individual forces occurring at the fingers, distance "P" at 6 bars.

### Dimension for D3PG125



3  
F  
I  
N  
G  
E  
R



# 3-Finger-Parallel-Grippers

**D3PG100**  
2 × 10mm  
1800N

**D3PG125**  
2 × 13mm  
3100N

**D3PG160**  
2 × 16mm  
6000N

## 3-Finger-Parallel-Gripper D3PG160

Type	Stroke per finger	*Gripping force at 6 bars	*Workpiece weight (recom.)	Air consump. per doublestroke	Opening time	Closing time	Mass	Mass moment of inertia	Repeat ability	Max. Finger length
D3PG160	16mm	6000N	25kg	520cm <sup>3</sup>	0.4s	0.4s	10kg	500kg cm <sup>2</sup>	0.05mm	160mm

\* Gripping force = arithmetic sum of the individual forces occurring at the fingers, distance "P" at 6 bars.

### Dimension for D3PG160

