

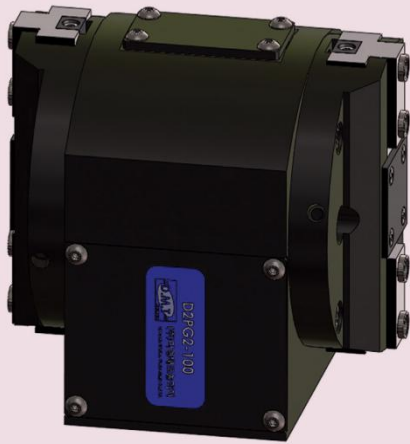
D2PG2 100
2 × 10mm
1200N

D2PG2 125
2 × 13mm
2060N

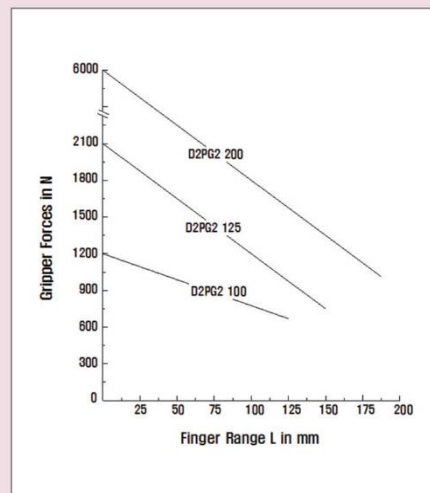
D2PG2 200
2 × 30mm
6000N

2-Finger-Double-Gripper

TYPE : D2PG2



< Gripper의 최대 파지력과 모멘트 >



Distinction

- Compact design(2Finger double turn gripper)
- Low weight
- High gripping force(2 × More)
- High reliability and long life
- Robot application

- 소형, 경량 구조(2개 Gripper의 일체형)
- 높은 파지력(2 ×)
- 높은 신뢰성과 긴 수명
- 다관절 로봇 및 Servo제어에 적합

- ▶ Principle of operation : over wedges mechanically restricted guidance, transmission of force through surfaces
- ▶ Material : housing is made of high-tensile, hard-coated aluminium alloy ; functional parts are made of hardened steel
- ▶ Actuation : pneumatic, compressed air filtered(10μm), dry or lubricated
- ▶ Range of operating pressure : from 2 to 8bars
- ▶ Operating temperature : form 5° to60℃(41°F to 140°F)
- ▶ Accessories : proximity switches, Spring-packaged pressure plate.

- ▶ 작동원리 : 쇄기형, 평형개폐형
- ▶ 재질 : 몸체 AL(Hard-Coated)
작동부위 Hardened Steel
- ▶ 구동원 : Pneumatic
- ▶ 사용압력 : 2~8bars
- ▶ 사용온도 : 5℃~60℃
- ▶ 압력 Plate 부착가능

D2PG2 100
2 × 10mm
1200N

D2PG2 125
2 × 13mm
2060N

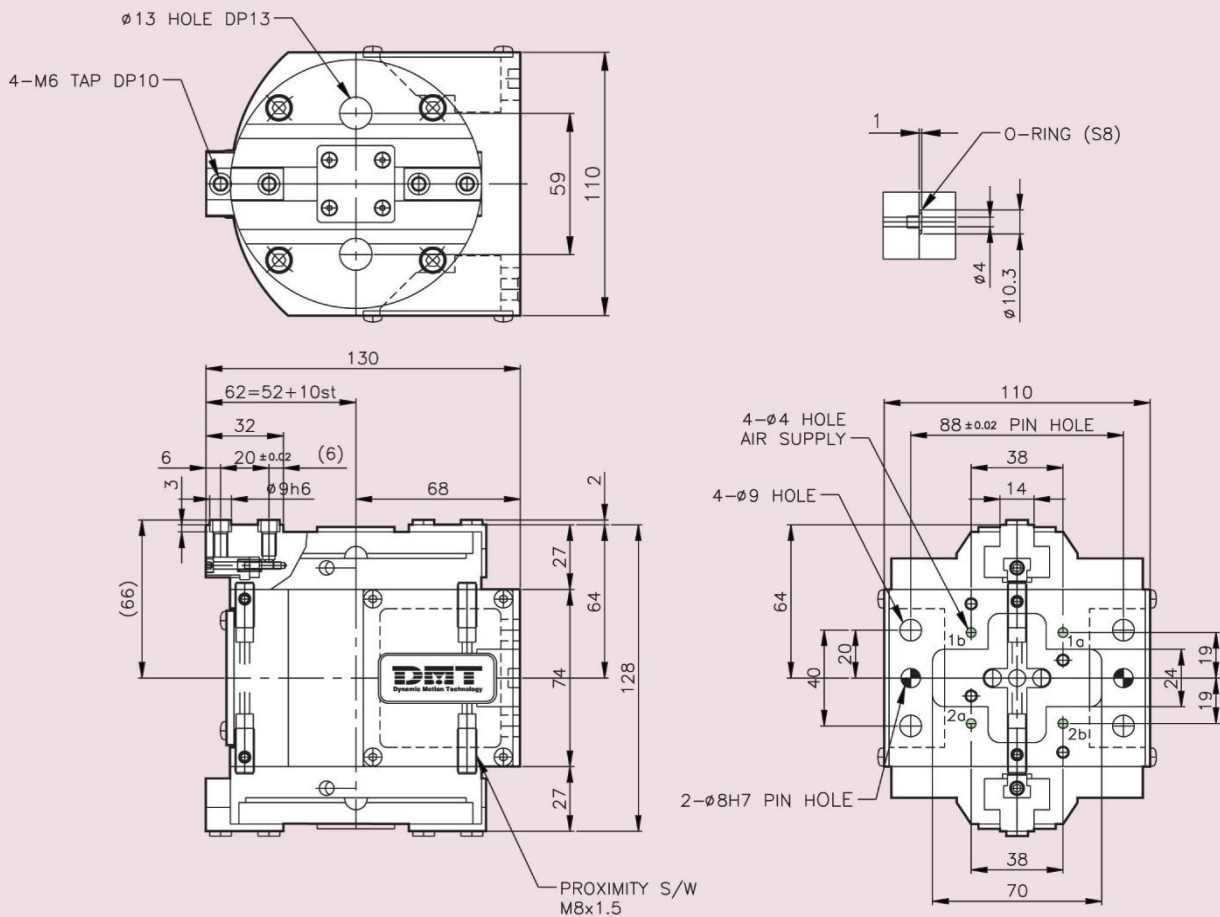
D2PG2 200
2 × 30mm
6000N

2-Finger-Double-Gripper D2PG2 100

Type	Stroke per finger	*Gripping force at 6 bars	*Workpiece weight (recom.)	Air consump. per doublestroke	Opening time	Closing time	Mass	Mass moment of inertia	Repeat ability	Max. Finger length
D2PG2 100	10mm	1200N	6kg	120cm ³	0.07s	0.08s	3.12kg	41kg cm ³	0.01mm	100mm

* Gripping force = arithmetic sum of the individual forces occurring at the fingers, distance "P" at 6 bars.

Dimension for D2PG2 100





2-Finger-Double-Grippers

D2PG2 100
2 × 10mm
1200N

D2PG2 125
2 × 13mm
2060N

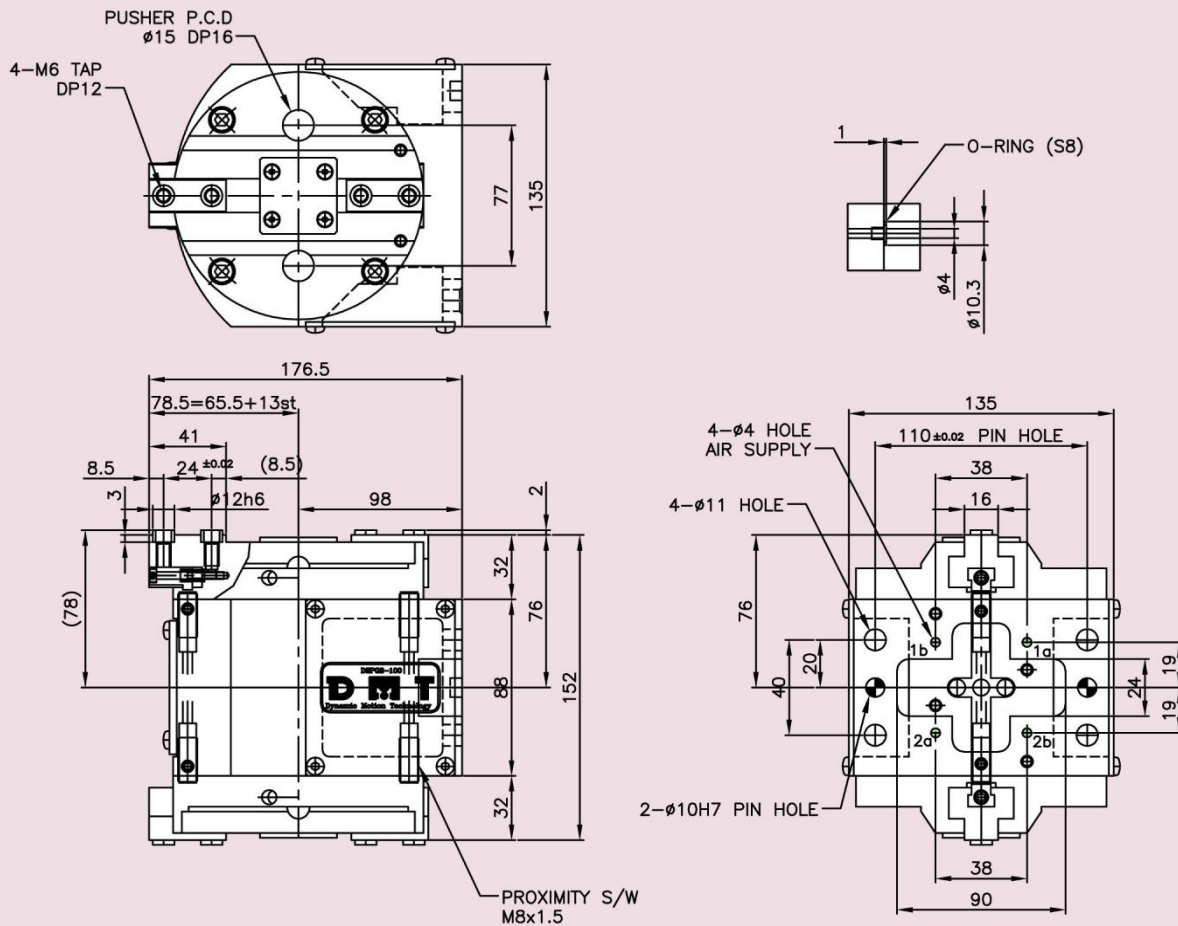
D2PG2 200
2 × 30mm
6000N

2-Finger-Double-Gripper D2PG2 125

Type	Stroke per finger	*Gripping force at 6 bars	*Workpiece weight (recom.)	Air consump. per doublestroke	Opening time	Closing time	Mass	Mass moment of inertia	Repeat ability	Max. Finger length
D2PG2 125	13mm	2060N	10.3kg	230cm ³	0.17s	0.17s	5.4kg	97kg cm ³	0.05mm	125mm

* Gripping force = arithmetic sum of the individual forces occurring at the fingers, distance "P" at 6 bars.

Dimension for D2PG2 125



2
F
I
N
G
E
R



2-Finger-Double-Grippers

D2PG2 100
2×10mm
1200N

D2PG2 125
2×13mm
2060N

D2PG2 200
2×30mm
6000N

2-Finger-Double-Gripper D2PG2 200

Type	Stroke per finger	*Gripping force at 6 bars	*Workpiece weight (recom.)	Air consump. per doublestroke	Opening time	Closing time	Mass	Mass moment of inertia	Repeat ability	Max. Finger length
D2PG2 200	30mm	6000N	30kg	1400cm ³	1.3s	1.3s	13kg	600kg cm ²	0.05mm	200mm

* Gripping force = arithmetic sum of the individual forces occurring at the fingers, distance "P" at 6 bars.

Dimension for D2PG2 200

