

**3PGS064**  
2×6mm  
410N

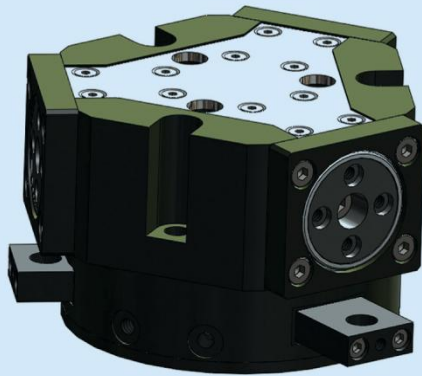
**3PGS080**  
2×8mm  
760N

**3PGS100**  
2×10mm  
1700N

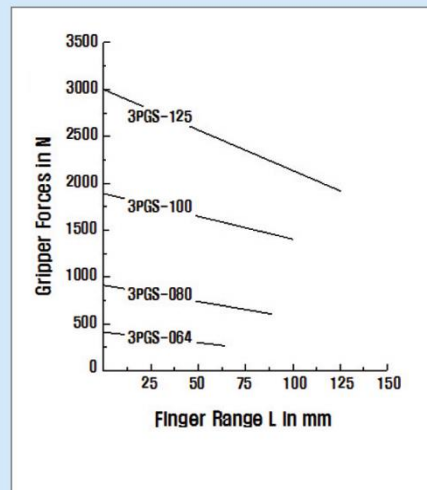
**3PGS125**  
2×13mm  
3000N

## 3-Finger-Centric-Gripper

TYPE : 3PGS



< Gripper의 최대 파지력과 모멘트 >



## Distinction

- Seal guide type
- Compact design
- High gripping force
- High reliability and long life
- Suitable for O.D and I.D gripping

- 씰 가이드를 사용한 쇠패기형
- 소형, 경량 구조
- 높은 파지력
- 높은 신뢰성과 긴 수명
- 내경과 외경을 잡기 적합한 구조

- ▶ Principle of operation : over wedges mechanically restricted guidance, transmission of force through surfaces
- ▶ Material : housing is made of high-tensile, hard-coated aluminium alloy ; functional parts are made of hardened steel
- ▶ Actuation : pneumatic, compressed air filtered(10μm), dry or lubricated
- ▶ Range of operating pressure : from 2 to 8bars
- ▶ Operating temperature : form 5° to 60℃(41°F to 140°F)
- ▶ Accessories : proximity switches, flexible positioning sensor, finger blocks, Spring-packaged pressure plate.

- ▶ 작동원리 : 쇠패기형, 평형개폐형
- ▶ 재질 : 몸체 AL(Hard-Coated)  
작동부위 Hardened Steel
- ▶ 구동원 : Pneumatic
- ▶ 사용압력 : 2~8bars
- ▶ 사용온도 : 5℃~60℃

**3PGS 064**  
2 × 6mm  
410N

**3PGS 080**  
2 × 8mm  
760N

**3PGS 100**  
2 × 10mm  
1700N

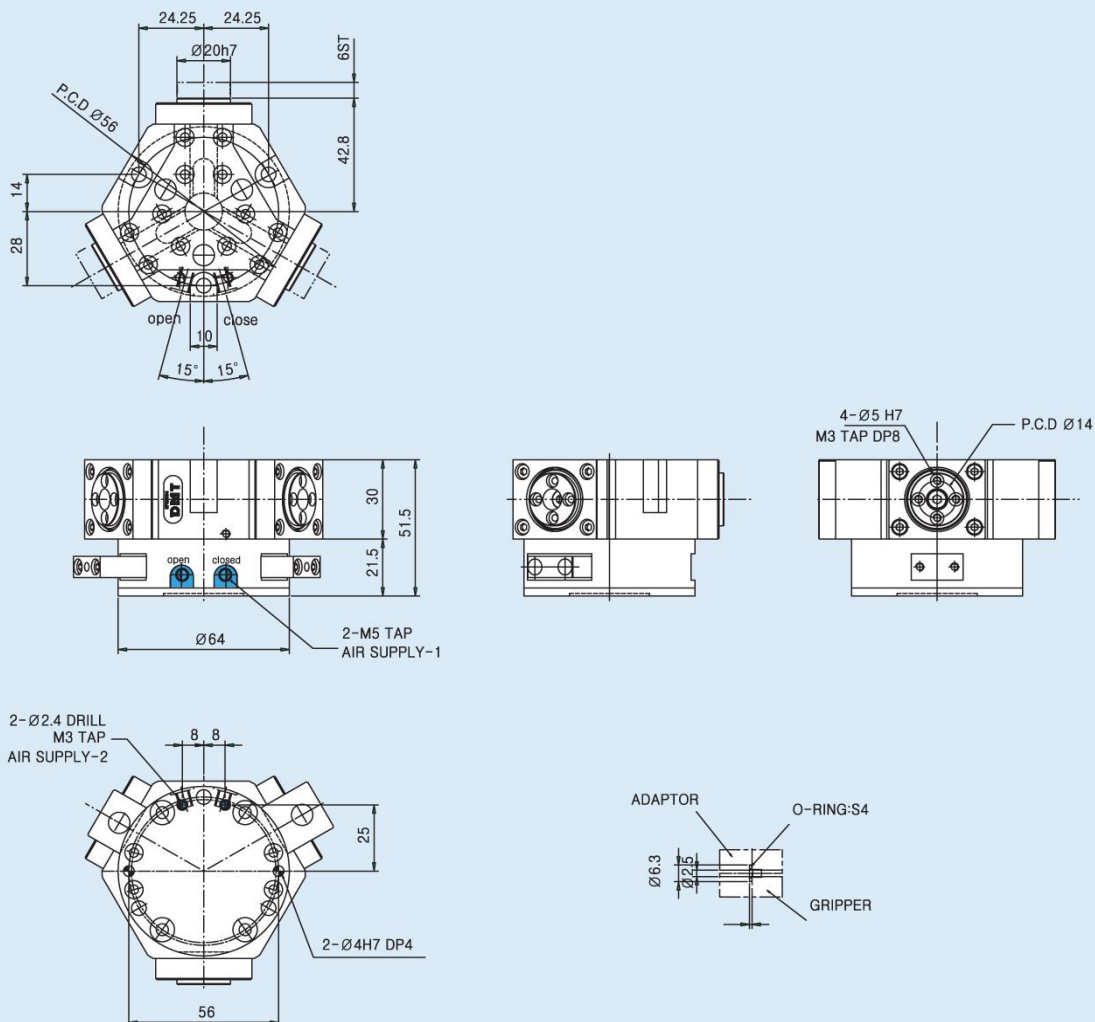
**3PGS 125**  
2 × 13mm  
3000N

## 3-Finger-Parallel-Gripper 3PGS 064

Type	Stroke per finger	*Gripping force at 6 bars	*Workpiece weight (recom.)	Air consump. per doublestroke	Opening time	Closing time	Mass	Mass moment of inertia	Repeat ability	Max. Finger length
3PGS 064	6mm	410N	2kg	25cm <sup>3</sup>	0.05s	0.05s	0.75kg	13kg cm <sup>2</sup>	0.03mm	65mm

\* Gripping force = arithmetic sum of the individual forces occurring at the fingers, distance "P" at 6 bars.

### Dimension for 3PGS 064



**3PGS 064**  
2×6mm  
410N

**3PGS 080**  
2×8mm  
760N

**3PGS 100**  
2×10mm  
1700N

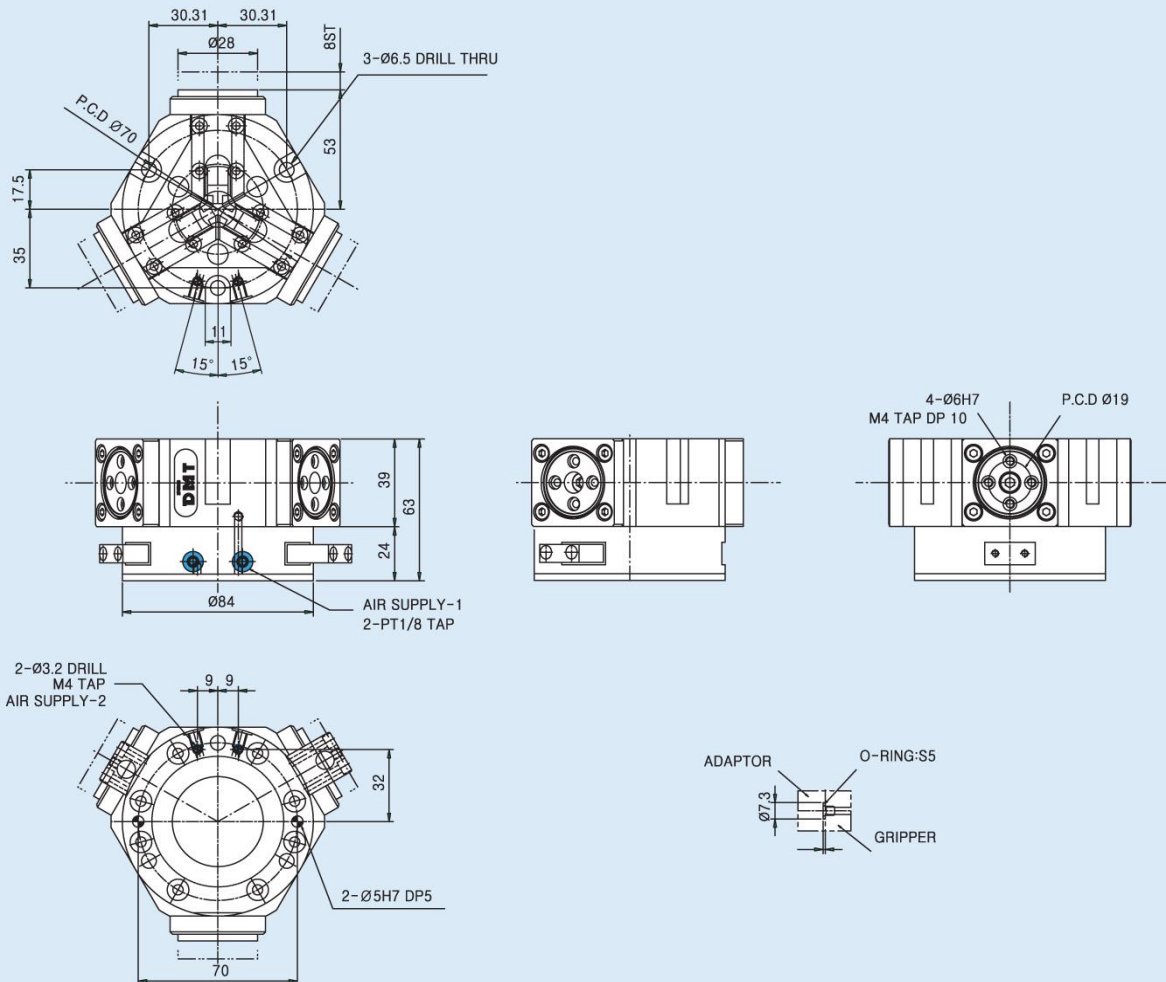
**3PGS 125**  
2×13mm  
3000N

## 3-Finger-Parallel-Gripper 3PGS 080

Type	Stroke per finger	*Gripping force at 6 bars	*Workpiece weight (recom.)	Air consump. per doublestroke	Opening time	Closing time	Mass	Mass moment of inertia	Repeat ability	Max. Finger length
3PGS 080	8mm	760N	3.8kg	60cm <sup>3</sup>	0.1s	0.1s	1.2kg	32kg cm <sup>2</sup>	0.03mm	80mm

\* Gripping force = arithmetic sum of the individual forces occurring at the fingers, distance "P" at 6 bars.

### Dimension for 3PGS 080



3 FINGER

**3PGS 064**  
2 × 6mm  
410N

**3PGS 080**  
2 × 8mm  
760N

**3PGS 100**  
2 × 10mm  
1700N

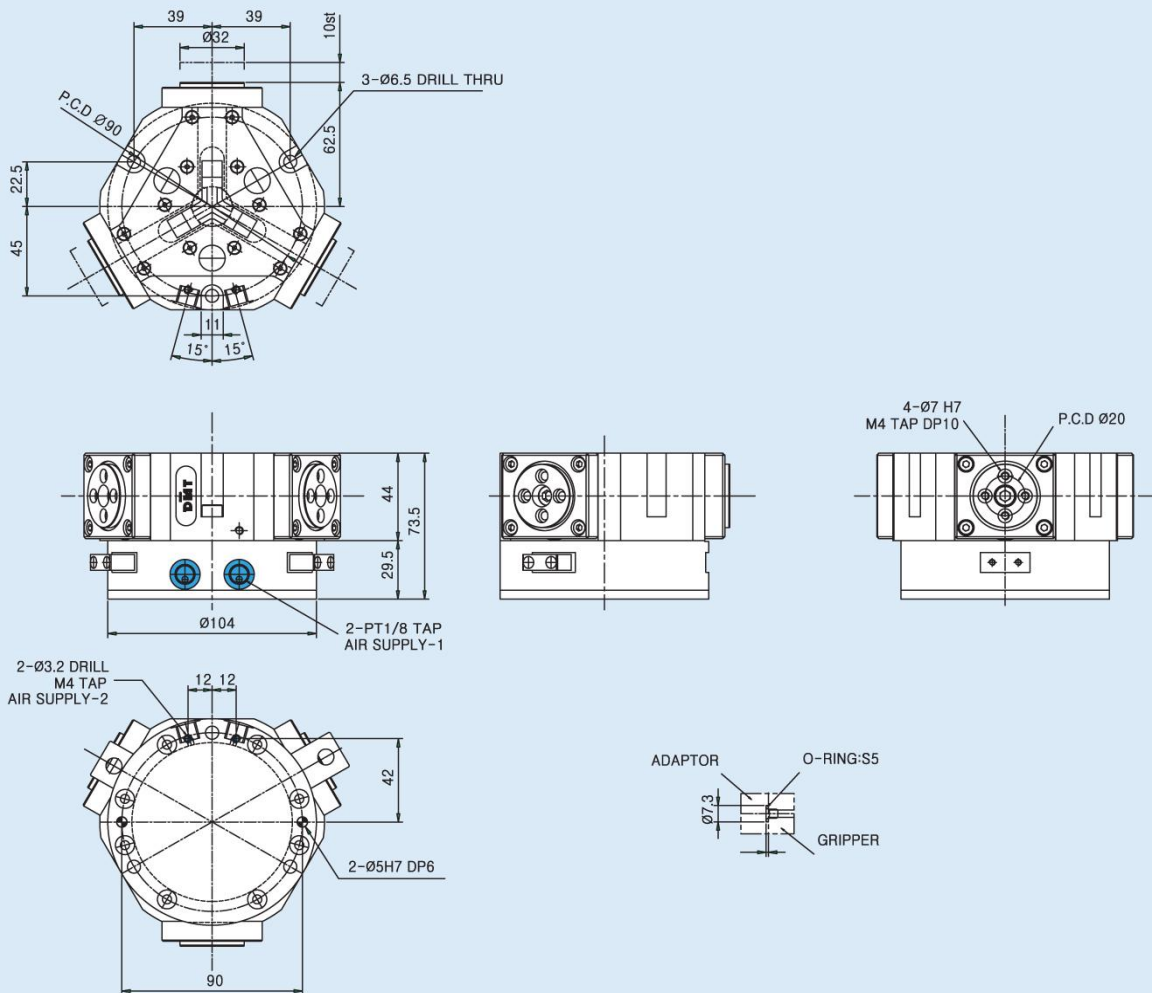
**3PGS 125**  
2 × 13mm  
3000N

## 3-Finger-Parallel-Gripper 3PGS 100

Type	Stroke per finger	*Gripping force at 6 bars	*Workpiece weight (recom.)	Air consump. per doublestroke	Opening time	Closing time	Mass	Mass moment of inertia	Repeat ability	Max. Finger length
3PGS 100	10mm	1700N	8.5kg	120cm <sup>3</sup>	0.15s	0.15s	2.6kg	75kg cm <sup>2</sup>	0.03mm	100mm

\* Gripping force = arithmetic sum of the individual forces occurring at the fingers, distance "P" at 6 bars.

### Dimension for 3PGS 100





# 3-Finger-Centric-Grippers

**3PGS 064**  
2 × 6mm  
410N

**3PGS 080**  
2 × 8mm  
760N

**3PGS 100**  
2 × 10mm  
1700N

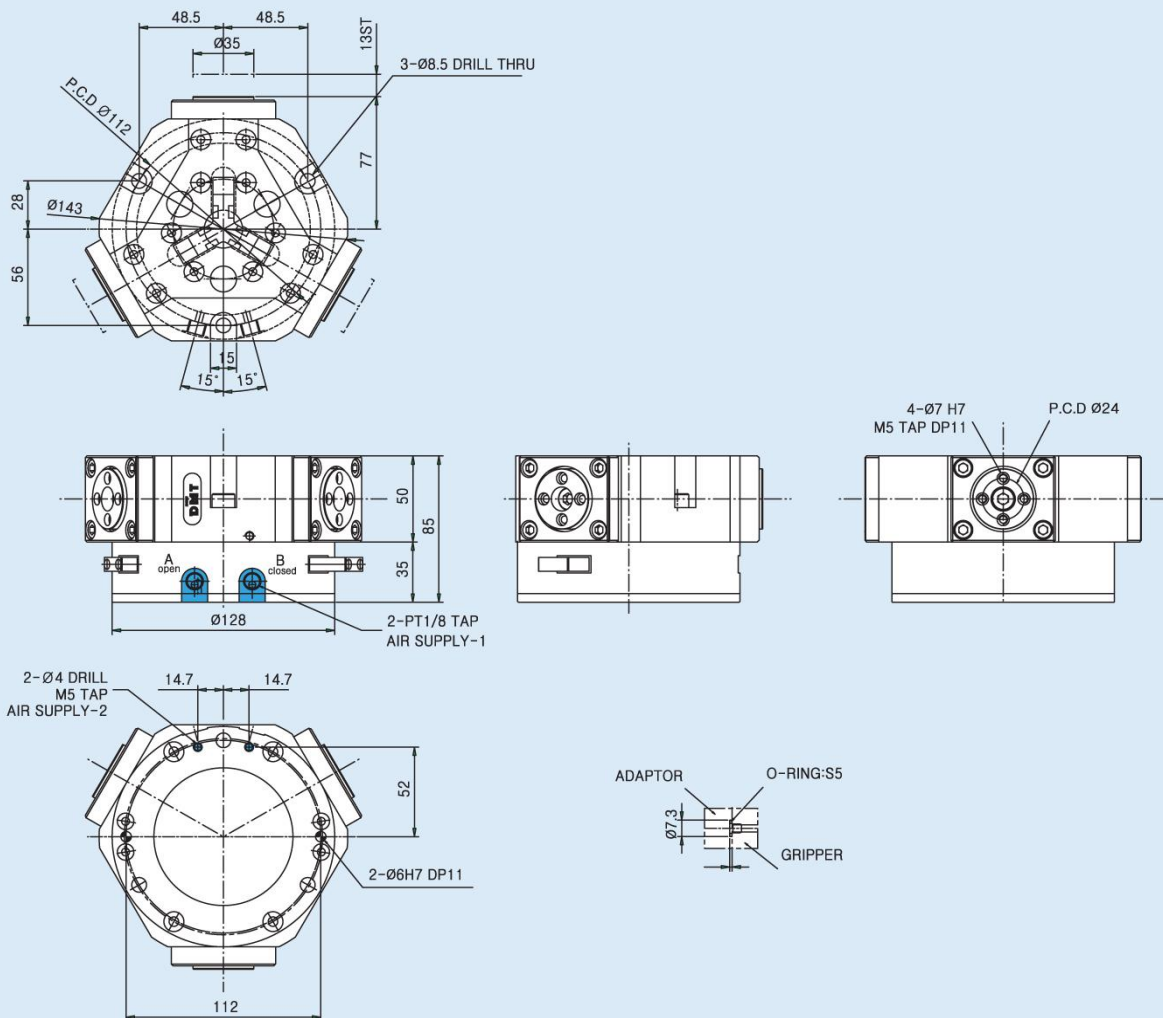
**3PGS 125**  
2 × 13mm  
3000N

## 3-Finger-Parallel-Gripper 3PGS 125

Type	Stroke per finger	*Gripping force at 6 bars	*Workpiece weight (recom.)	Air consump. per doublestroke	Opening time	Closing time	Mass	Mass moment of inertia	Repeat ability	Max. Finger length
3PGS 125	13mm	3000N	15kg	240cm <sup>3</sup>	0.2s	0.2s	5kg	150kg cm <sup>2</sup>	0.03mm	125mm

\* Gripping force = arithmetic sum of the individual forces occurring at the fingers, distance "P" at 6 bars.

### Dimension for 3PGS 125



3  
F  
I  
N  
G  
E  
R