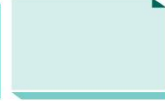
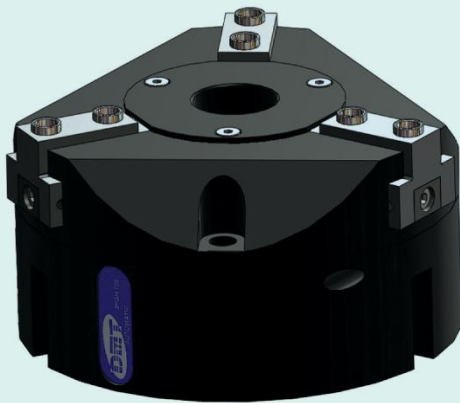


3PGH100
2×8mm
1800N

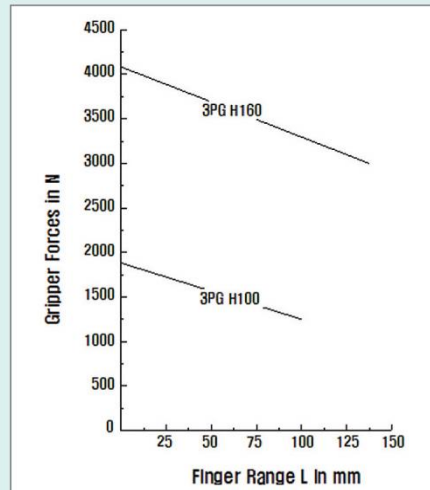
3PGH160
2×13mm
4500N



3-Finger-Centric-Gripper With Hole TYPE : 3PGH



< Gripper의 최대 파지력과 모멘트 >



Distinction

- Small, Compact design
- Suitable for I.D and O.D. gripping
- Strong gripping force
- Excellent repeatability
- Very reliable
- Stroke monitoring Using proximity switch
- Robust slideway suitable for high torques
- Universal connection

- 소형, 경량 구조
- 외경과 내경을 단단히 잡는 구조
- 강한 파지력
- 우수한 반복성
- 높은 신뢰성
- 근접 Sensor를 이용한 Stroke 감지
- 높은 토크에 맞는 강한 슬라이드 면
- 보편적인 접속 형식

- ▶ Operating principle : wedge and piston design with mechanically restricted guide
- ▶ Material : housing is made of high-tensile, hard-coated aluminium alloy ; functional parts are hardened steel
- ▶ Operating : pneumatic
- ▶ Operating pressure range : 4.5 to 8 bars
- ▶ Installation : in various position
- ▶ Parts supplied : brackets for proximity switch, position pin O-ring

- ▶ 작동원리 : 기계적으로 제한되는 가이드가 있는 쉘기와 피스톤 형식
- ▶ 재질 : 몸체 AL(Hard-Coated) 작동부위 Hardened Steel
- ▶ 구동원 : 공기압
- ▶ 사용압력 : 4.5~8bars
- ▶ 설치 : 다양한 위치 설치 가능
- ▶ 공급부품 : 센서 bracket, 위치 고정 Pin O-ring



3-Finger-Centric-Grippers with Hole

3PGH100
2×8mm
1800N

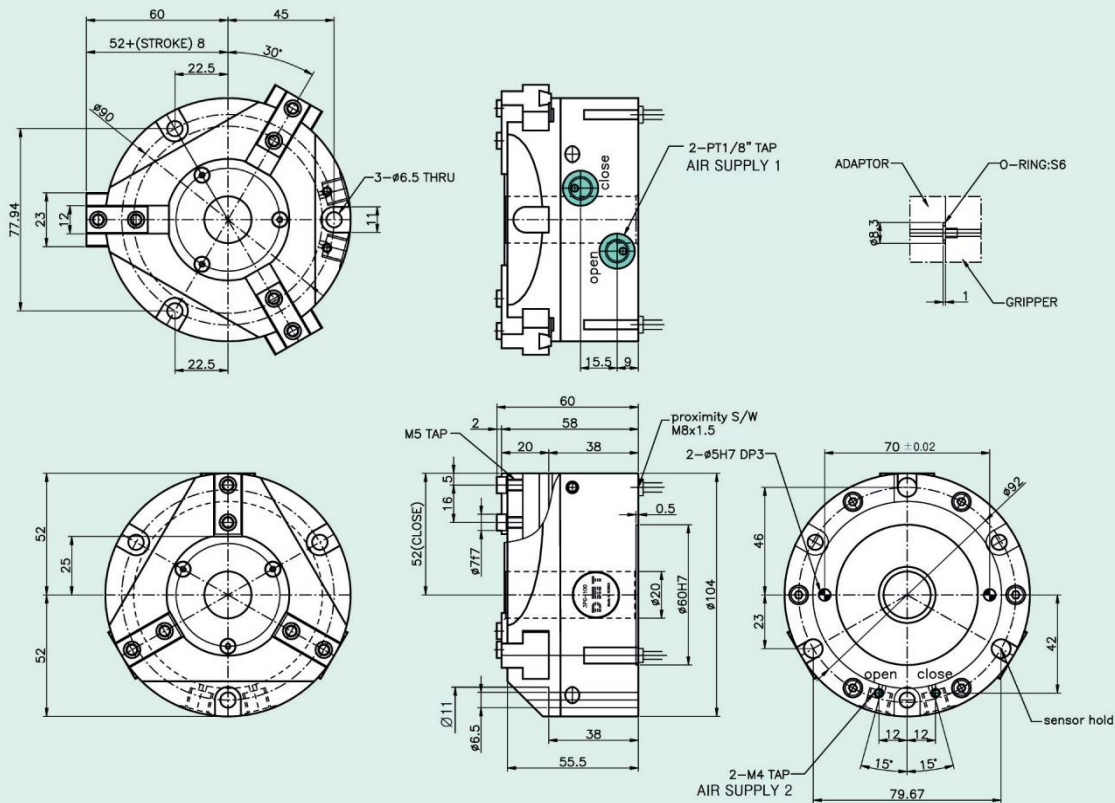
3PGH160
2×13mm
4500N

2-Finger-Centric-Gripper 3PGH100

Type	Stroke per finger	*Gripping force at 6 bars	*Workpiece weight (recom.)	Air consump. per doublestroke	Opening time	Closing time	Mass	Mass moment of inertia	Repeat ability	Max. Finger length
3PGH100	8mm	1800N	9kg	95cm ³	0.1s	0.1s	1.2kg	16kg cm ³	0.01mm	80mm

* Gripping force = arithmetic sum of the individual forces occurring at the fingers, distance "P" at 6 bars.

Dimension for 3PGH100



3
F
I
N
G
E
R



3-Finger-Centric-Grippers with Hole

3PGH100
2 × 8mm
1800N

3PGH160
2 × 13mm
4500N

2-Finger-Centric-Gripper 3PGH160

Type	Stroke per finger	*Gripping force at 6 bars	*Workpiece weight (recom.)	Air consump. per doublestroke	Opening time	Closing time	Mass	Mass moment of inertia	Repeat ability	Max. Finger length
3PGH160	13mm	4500N	22.5kg	360cm ³	0.4s	0.3s	4kg	130kg cm ³	0.02mm	125mm

* Gripping force = arithmetic sum of the individual forces occurring at the fingers, distance "P" at 6 bars.

Dimension for 3PGH160

