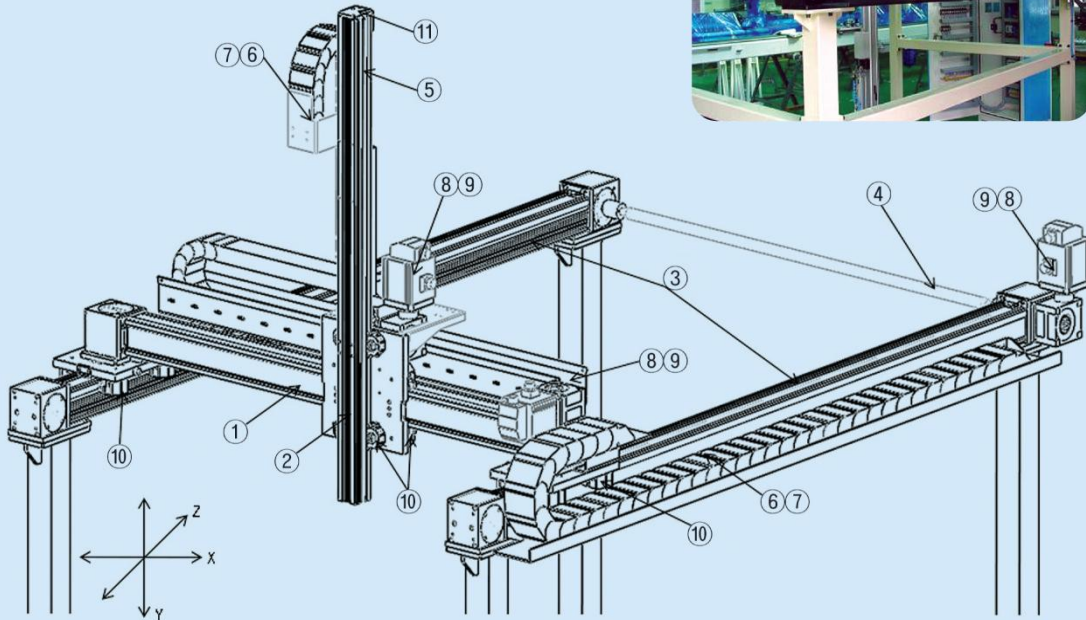


●● 3GH Type



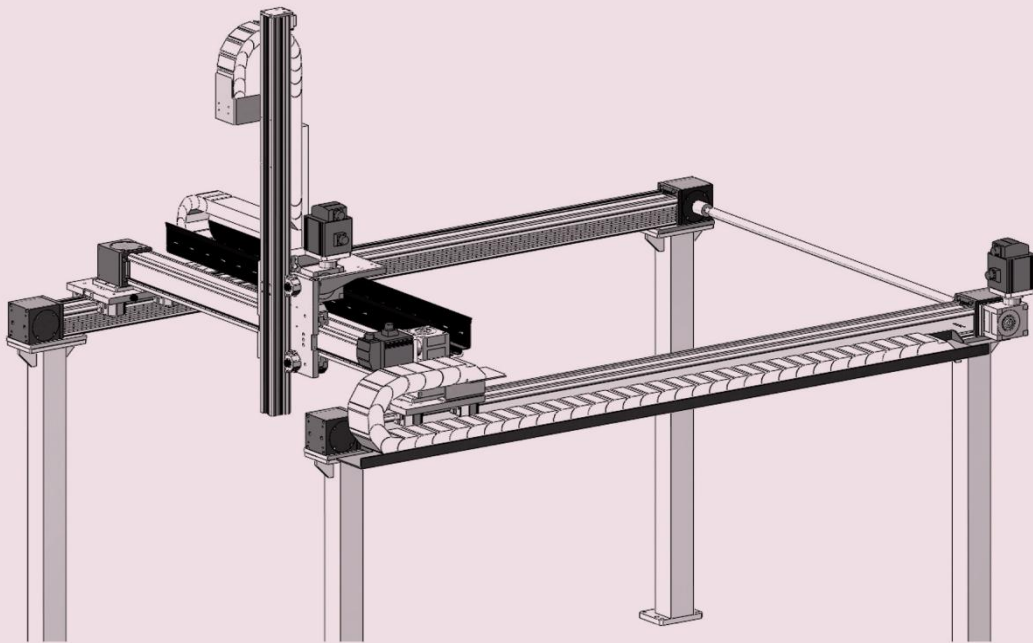
NO.	DESCRIPTION	STANDARD	OPTION
1	X-AXIS (APB POSITION SYSTEM)	●	
2	Y-AXIS BEAM	●	
3	Z-AXIS (APB POSITION SYSTEM)	●	
4	동기 SHAFT & COUPLING	●	
5	RACK GEAR	●	
6	CABLE BKT	●	
7	CABLE CHAIN	●	
8	WORM GEAR BOX	●	
9	SERVO MOTOR		●
10	GUIDEWAY ROLLER	●	
11	STOPPER	●	
*	POST		●
	SAFETY FENCE		●

3GH 20
20kg

3GH 50
50kg

3-AXIS GANTRY SYSTEM

TYPE : 3-AXIS H-TYPE



Distinction

- | | |
|---|--|
| ▶ Principle of operation : Rack & Pinion unit
Timing Belt | ▶ 구동원리 : Rack & Pinion
Timing Belt 구동형식 |
| ▶ Material : Beam - Square pipe
Up-down beam - AL6061 pipe
Carriage plate - AL6061 | ▶ 재질 : Beam - Square pipe
Up-down beam - AL6061 pipe
Carriage plate - AL6061 |
| ▶ Speed : Bearing roller based U slide system
allow speeds | ▶ 속도 : U형 안내방식에 의한 고속성 실현 |
| ▶ Durable : Rugged construction - All steel hardened and ground
slideway-unique wiping action excludes debris. | ▶ 내구성 : 슬라이드부는 열처리, 연마 강을 사용
와이퍼 장치는 불순물을 배척하여
수명 향상 |



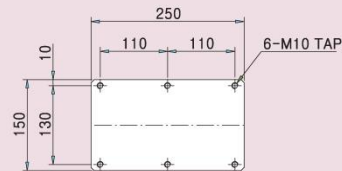
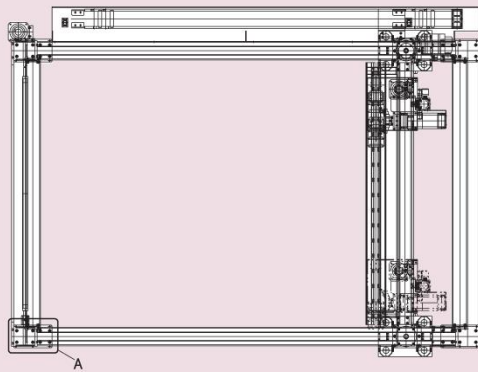
3-AXIS Gantry Systems

SYSTEM

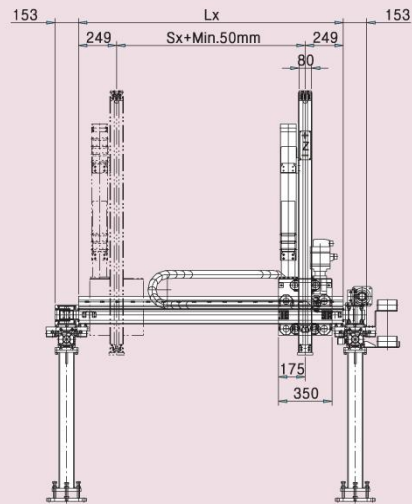
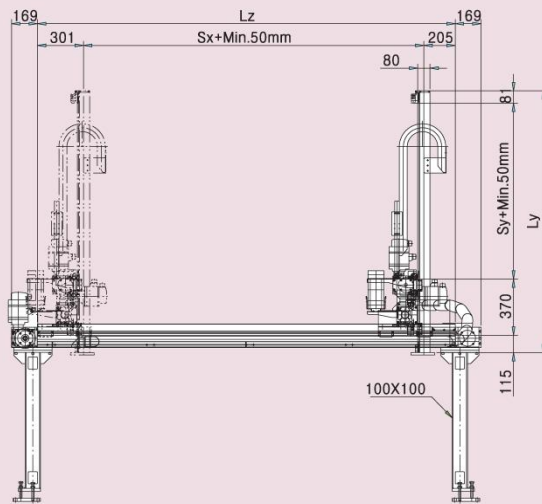


Type	Max. Pay Load	Max. Speed(m/min)			Acceleration(m/s ²)			Repeatability (mm)
		X	Y	Z	X	Y	Z	
3GH 20	20kg	150	150	100	3	3	2	±0.1

Beam Size			Pulley Teeth			Belt Type			Gearbox		
X	Y	Z	X	Y	Z	X	Y	Z	X	Y	Z
AP110-20B	AP80-16B	AP110-20B	36	24	36	S8M-50	S8M-30	S8M-50	FH045 (3:1)	FH030 (3:1)	FH030 (3:1)



DETAIL "A"
(SCALE 2/1)





3-AXIS Gantry Systems

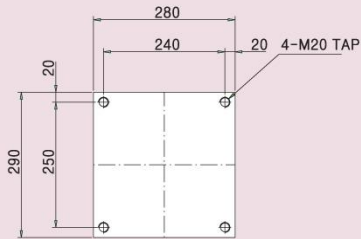
3GH 20
20kg

3GH 50
50kg

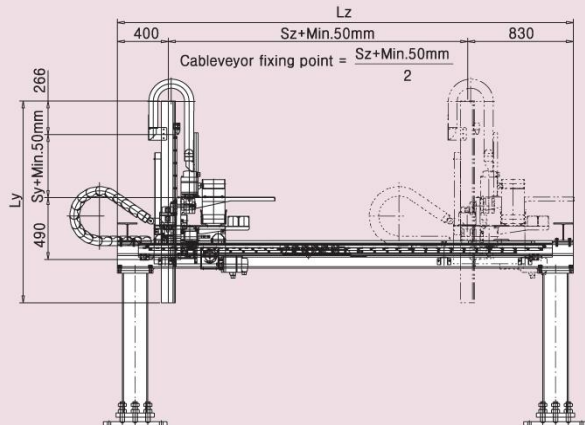
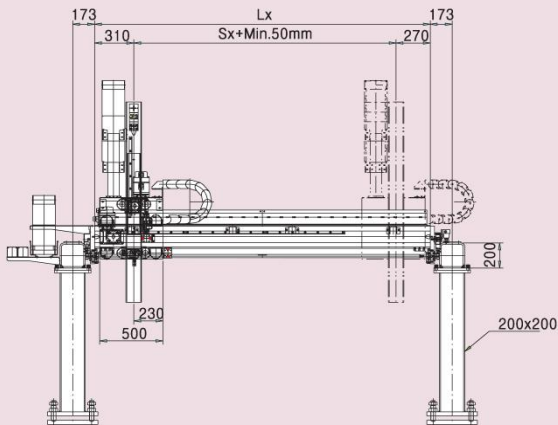
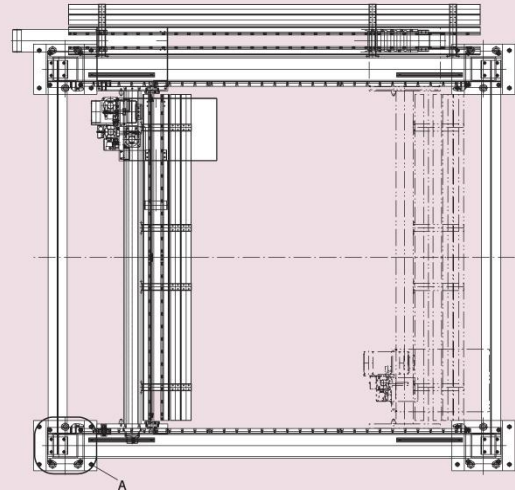


Type	Max. Pay Load	Max. Speed(m/min)			Acceleration(m/s ²)			Repeatability (mm)
		X	Y	Z	X	Y	Z	
3GH 50	50kg	150	120	100	5	3	2	±0.1

Beam Size			Rack			Pinion			Gearbox		
X	Y	Z	X	Y	Z	X	Y	Z	X	Y	Z
SP200-30RP	AP110-20RP	AP166-30RP	Pitch: 7.5 Width: 25	Pitch: 7.5 Width: 25	Pitch: 7.5 Width: 25	Pitch: 7.5 Teeth: 20	Pitch: 7.5 Teeth: 20	Pitch: 7.5 Teeth: 20	FH060 (3:1)	FH045 (3:1)	FH045 (5:1)



DETAIL "A"
(SCALE 4/1)





3-AXIS Gantry Systems

3GH 20 20kg	3GH 50 50kg					
-----------------------	-----------------------	--	--	--	--	--

Type	Max. Pay Load	Max. Speed(m/min)			Acceleration(m/s ²)			Repeatability (mm)
		X	Y	Z	X	Y	Z	
3GH 50	50kg	150	120	100	5	3	2	±0.1

Beam Size			Rack			Pinion			Gearbox		
X	Y	Z	X	Y	Z	X	Y	Z	X	Y	Z
SP200-30RP	AP110-20RP	AP166-30RP	Pitch: 7.5 Width: 25	Pitch: 7.5 Width: 25	Pitch: 7.5 Width: 25	Pitch: 7.5 Teeth: 20	Pitch: 7.5 Teeth: 20	Pitch: 7.5 Teeth: 20	FH060 (3:1)	FH045 (3:1)	FH045 (5:1)

SYSTEM

