

**2RG020**  
2×90°  
60N

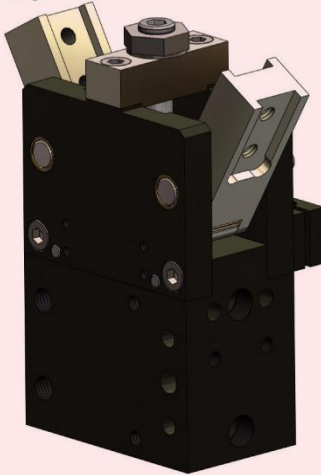
**2RG035**  
2×90°  
360N

**2RG040**  
2×90°  
520N

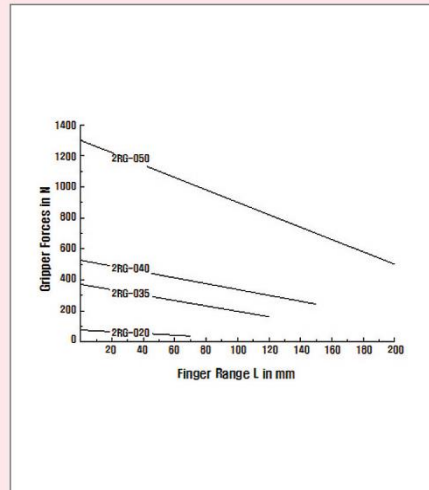
**2RG050**  
2×90°  
1300N

## 2-Finger-Angular-Gripper

TYPE : 2RG



< Gripper의 최대 파지력과 모멘트 >



## Distinction

- 180° opening angle
- Small, Compact design
- Centric grippers for O.D. gripping
- Strong gripping force
- Excellent repeatability
- Very reliable
- Stroke monitoring Using proximity switch

- 동작 범위 40°
- 소형, 경량 구조
- 외경 중심 파지 형식
- 강한 파지력
- 우수한 반복성
- 높은 신뢰성
- 근접 Sensor를 이용한 Stroke 감지

- ▶ Operating principle : force guided toggle drive system
- ▶ Material : housing is made of high-tensile, hard-coated aluminium alloy ; functional parts are hardened steel
- ▶ Operating : pneumatic
- ▶ Operating pressure range : 4.5 to 8 bars
- ▶ Installation : in various position
- ▶ Parts supplied : brackets for proximity switch, position pin O-ring

- ▶ 작동원리 : 토글 이음새를 이용한 힘의 전달 방식
- ▶ 재질 : 몸체 AL(Hard-Coated)  
작동부위 Hardened Steel
- ▶ 구동원 : 공기압
- ▶ 사용압력 : 4.5~8bars
- ▶ 설치 : 다양한 위치 설치 가능
- ▶ 공급부품 : 센서 고정판, 위치 고정 Pin O-ring

# 2-Finger-Angular-Grippers

**2RG 020**  
2×90°  
60N

**2RG 035**  
2×90°  
360N

**2RG 040**  
2×90°  
520N

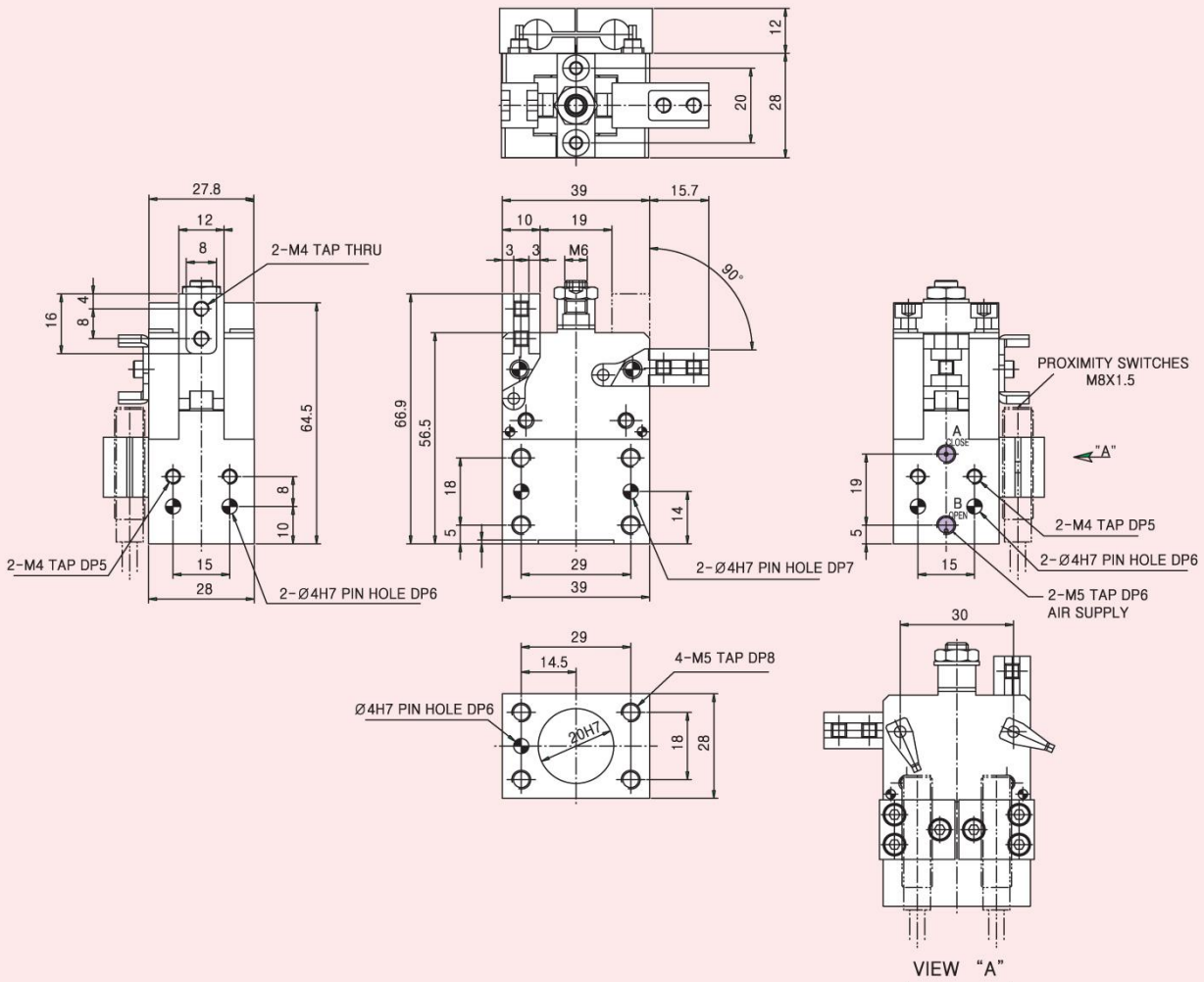
**2RG 050**  
2×90°  
1300N

## 2-Finger-Angular-Gripper 2RG 020

Type	Opening angle per Finger	*Gripping force at 6 bars	*Workpiece weight (recom.)	Air consump. per doublestroke	Opening time	Closing time	Mass	Mass moment of inertia	Repeat ability	Max. Finger length
2RG 020	90°	60N	0.3kg	9cm <sup>3</sup>	0.4s	0.4s	0.22kg	0.2kg cm <sup>2</sup>	0.1mm	60mm

\* Gripping force = arithmetic sum of the individual forces occurring at the fingers, distance "P" at 6 bars.

### Dimension for 2RG 020





# 2-Finger-Angular-Grippers

**2RG 020**  
2 × 90°  
60N

**2RG 035**  
2 × 90°  
360N

**2RG 040**  
2 × 90°  
520N

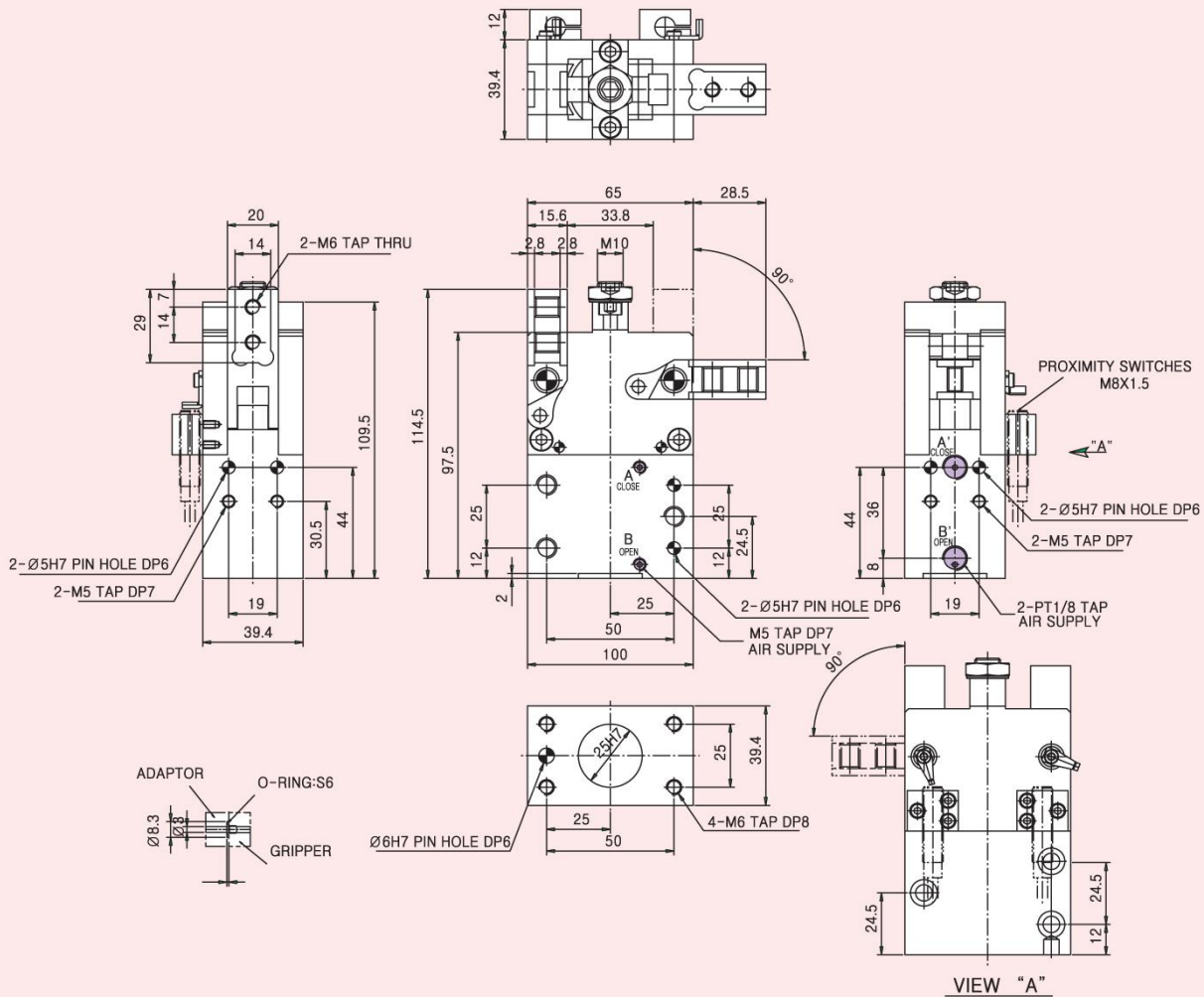
**2RG 050**  
2 × 90°  
1300N

## 2-Finger-Angular-Gripper 2RG 035

Type	Opening angle per Finger	*Gripping force at 6 bars	*Workpiece weight (recom.)	Air consump. per doublestroke	Opening time	Closing time	Mass	Mass moment of inertia	Repeat ability	Max. Finger length
2RG 035	90°	360N	1.8kg	43cm <sup>3</sup>	0.7s	0.7s	0.9kg	4kg cm <sup>2</sup>	0.1mm	130mm

\* Gripping force = arithmetic sum of the individual forces occurring at the fingers, distance "P" at 6 bars.

### Dimension for 2RG 035



2  
F  
I  
N  
G  
E  
R

# 2-Finger-Angular-Grippers

**2RG 020**  
2×90°  
60N

**2RG 035**  
2×90°  
360N

**2RG 040**  
2×90°  
520N

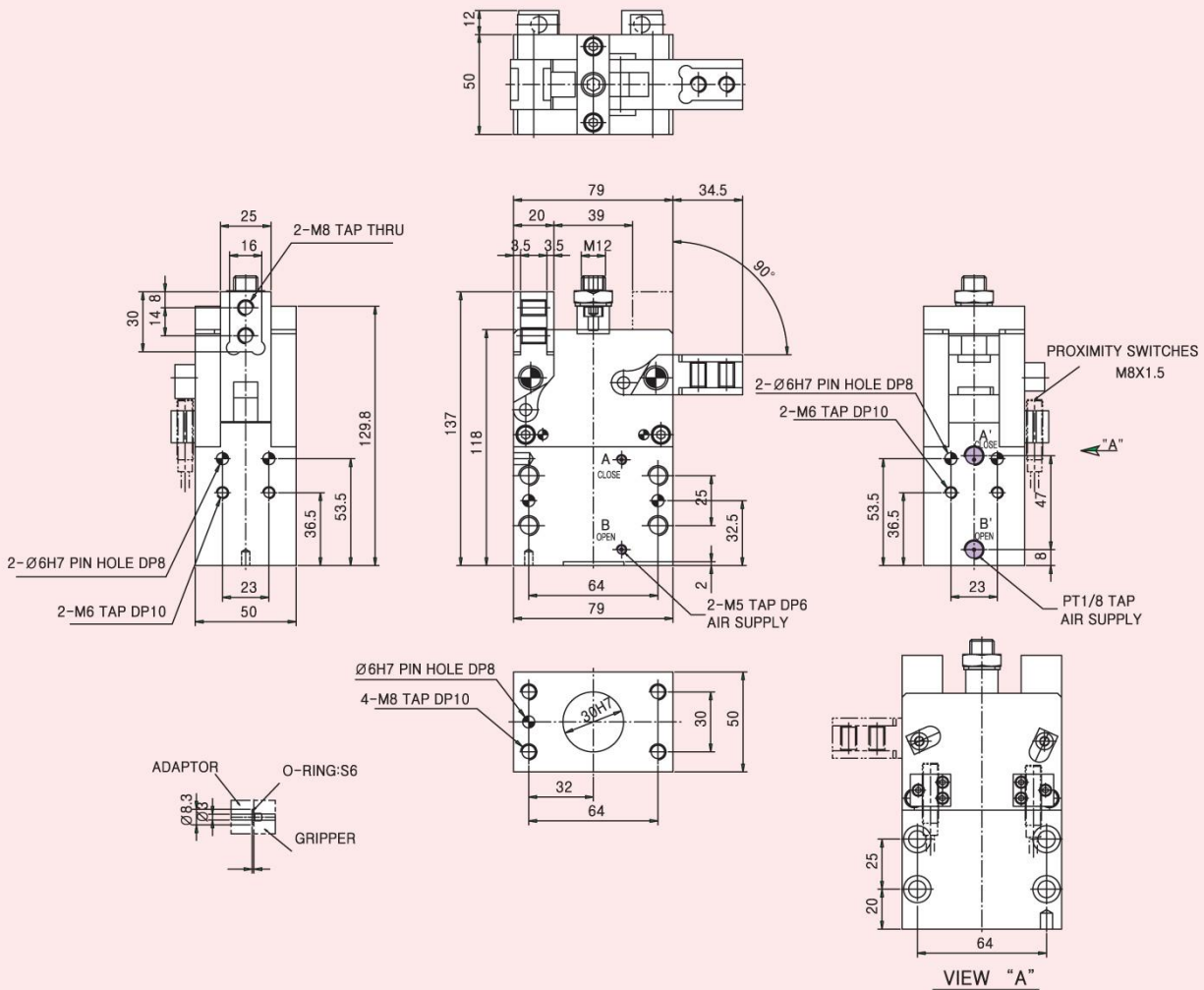
**2RG 050**  
2×90°  
1300N

## 2-Finger-Angular-Gripper 2RG 040

Type	Opening angle per Finger	*Gripping force at 6 bars	*Workpiece weight (recom.)	Air consump. per doublestroke	Opening time	Closing time	Mass	Mass moment of inertia	Repeat ability	Max. Finger length
2RG 040	90°	520N	2.6kg	110cm <sup>3</sup>	0.8s	0.8s	1.7kg	12kg cm <sup>2</sup>	0.1mm	150mm

\* Gripping force = arithmetic sum of the individual forces occurring at the fingers, distance "P" at 6 bars.

### Dimension for 2RG 040





# 2-Finger-Angular-Grippers

**2RG 020**  
2×90°  
60N

**2RG 035**  
2×90°  
360N

**2RG 040**  
2×90°  
520N

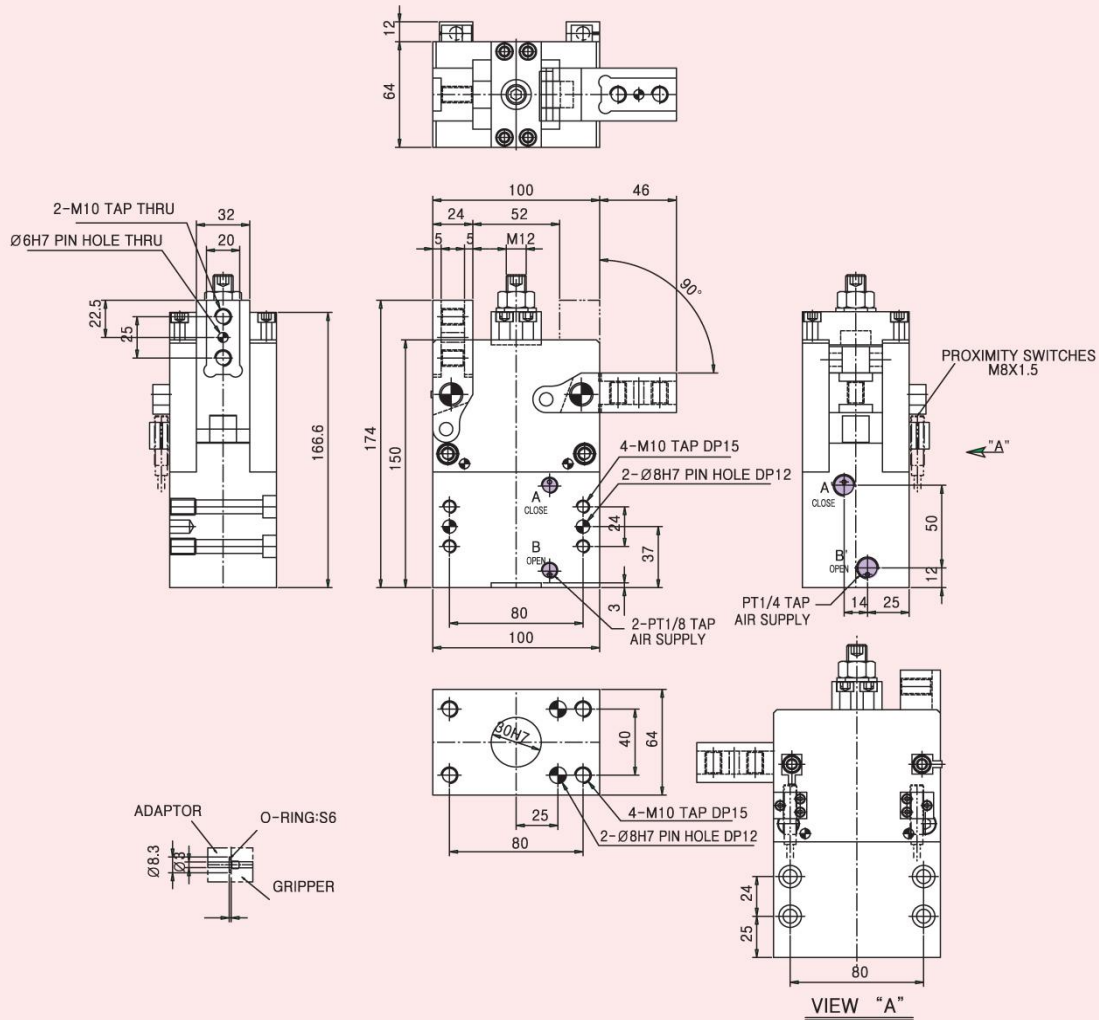
**2RG 050**  
2×90°  
1300N

## 2-Finger-Angular-Gripper 2RG 050

Type	Opening angle per Finger	*Gripping force at 6 bars	*Workpiece weight (recom.)	Air consump. per doublestroke	Opening time	Closing time	Mass	Mass moment of inertia	Repeat ability	Max. Finger length
2RG 050	90°	1300N	6.5kg	160cm <sup>3</sup>	0.8s	0.8s	3.5kg	41kg cm <sup>2</sup>	0.1mm	200mm

\* Gripping force = arithmetic sum of the individual forces occurring at the fingers, distance "P" at 6 bars.

### Dimension for 2RG 050



2 FINGER