

2PGS 064
2 × 6mm
130N

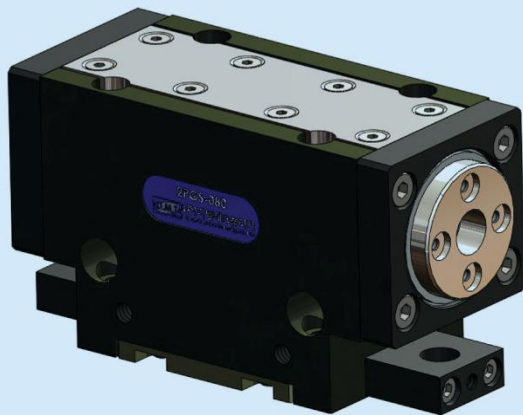
2PGS 080
2 × 8mm
250N

2PGS 100
2 × 10mm
430N

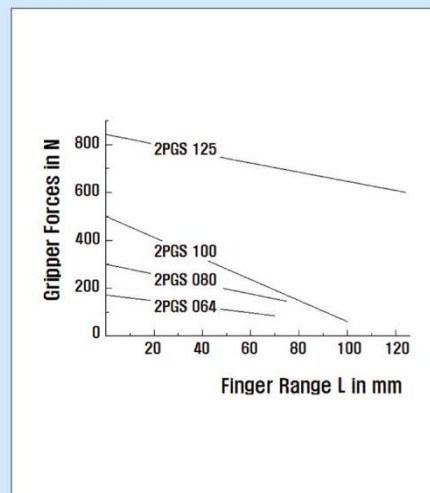
2PGS 125
2 × 13mm
820N

2-Finger-Parallel-Gripper

TYPE : 2PGS



< Gripper의 최대 파지력과 모멘트 >



Distinction

- Seal Guide Type
- Compact Design
- Low Weight
- High Gripping Force
- High Reliability and Long Life

- 썰 가이드를 사용한 썰기형
- 소형, 경량 구조
- 높은 파지력
- 높은 신뢰성과 긴 수명

- ▶ Principle of operation : Over Wedges Mechanically Restricted Guidance, Transmission of Force Through Surfaces
- ▶ Material : Housing is Made of High-tensile Hard-coated Aluminium Alloy ; Functional Parts are Made of Hardened Steel
- ▶ Actuation : Pneumatic, Compressed Air Filtered(10 μ m), Dry or Lubricated
- ▶ Range of Operating Pressure : From 2 to 8Bars
- ▶ Operating Temperature : From 5 $^{\circ}$ C~60 $^{\circ}$ C(41 $^{\circ}$ F to 140 $^{\circ}$ F)
- ▶ Accessories : Proximity Switches

- ▶ 작동원리 : 썰기형, 평형개폐형
- ▶ 재질 : AL(Hard-Coated) Hardened Steel
- ▶ 구동원 : Pneumatic
- ▶ 사용압력 : 2~8bars
- ▶ 사용온도 : 5 $^{\circ}$ C~60 $^{\circ}$ C



2-Finger-Parallel-Grippers

2PGS 064
2 × 6mm
130N

2PGS 080
2 × 8mm
250N

2PGS 100
2 × 10mm
430N

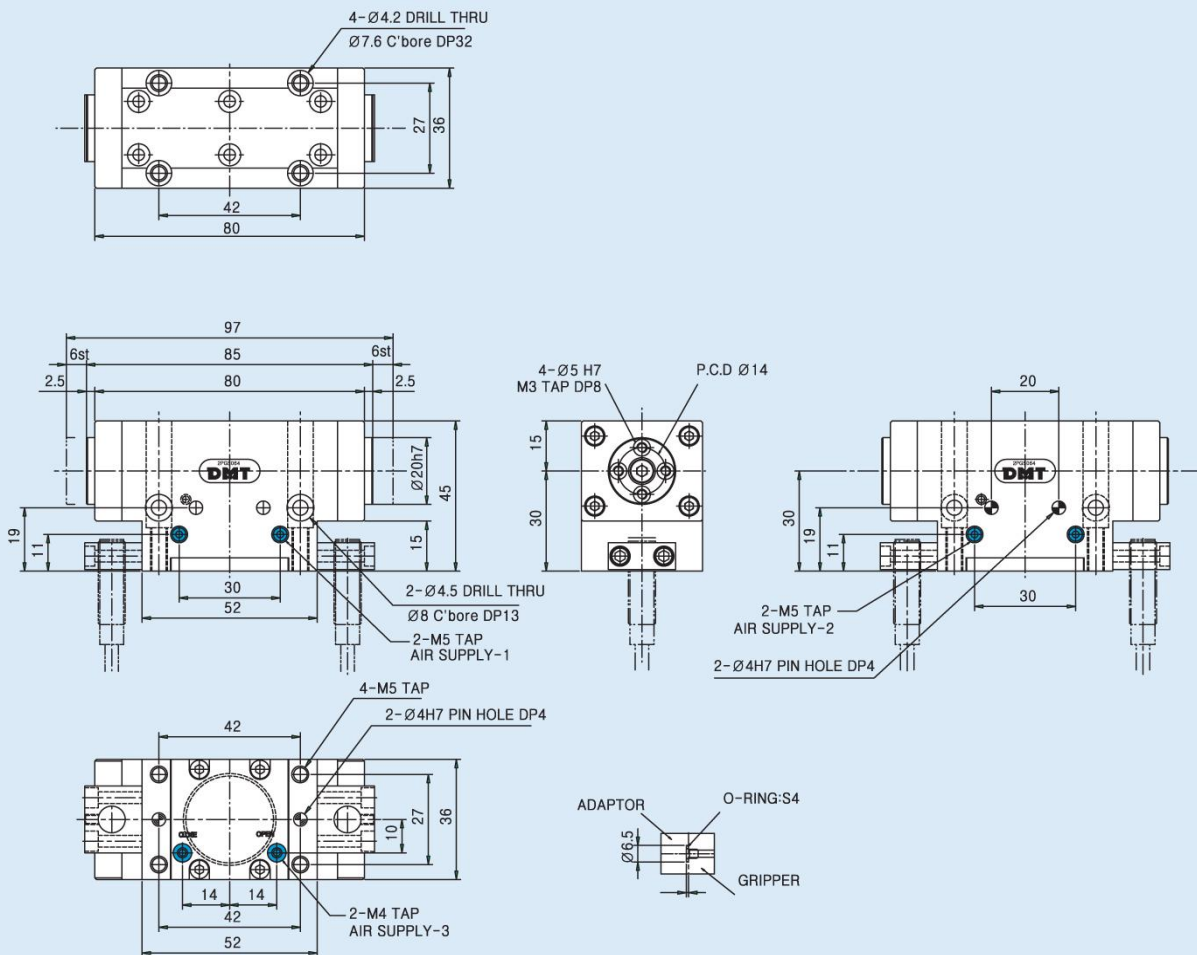
2PGS 125
2 × 13mm
820N

2-Finger-Parallel-Gripper 2PGS 064

Type	Stroke per finger	*Gripping force at 6 bars	*Workpiece weight (recom.)	Air consump. per doublestroke	Opening time	Closing time	Mass	Mass moment of inertia	Repeat ability	Max. Finger length
2PGS 064	6mm	130N	0.65kg	10cm ³	0.05s	0.05s	0.45kg	2kg cm ²	0.03mm	65mm

* Gripping force = arithmetic sum of the individual forces occurring at the fingers, distance "P" at 6 bars.

Dimension for 2PGS 064



2PGS 064
2 × 6mm
130N

2PGS 080
2 × 8mm
250N

2PGS 100
2 × 10mm
430N

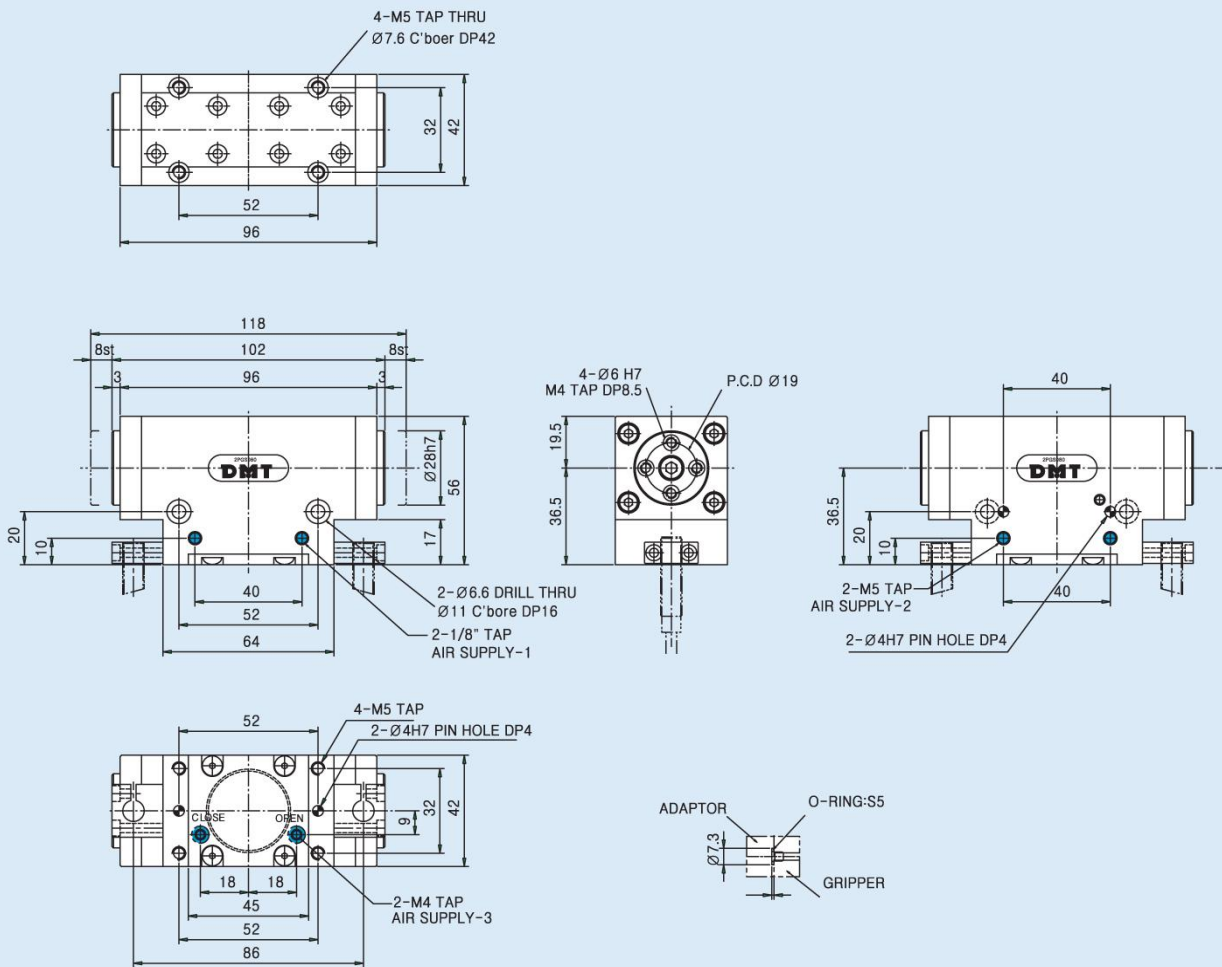
2PGS 125
2 × 13mm
820N

2-Finger-Parallel-Gripper 2PGS 080

Type	Stroke per finger	*Gripping force at 6 bars	*Workpiece weight (recom.)	Air consump. per doublestroke	Opening time	Closing time	Mass	Mass moment of inertia	Repeat ability	Max. Finger length
2PGS 080	8mm	250N	1.2kg	20cm ³	0.05s	0.05s	0.75kg	11kg cm ²	0.03mm	80mm

* Gripping force = arithmetic sum of the individual forces occurring at the fingers, distance "P" at 6 bars.

Dimension for 2PGS 080



2PGS 064
2×6mm
130N

2PGS 080
2×8mm
250N

2PGS 100
2×10mm
430N

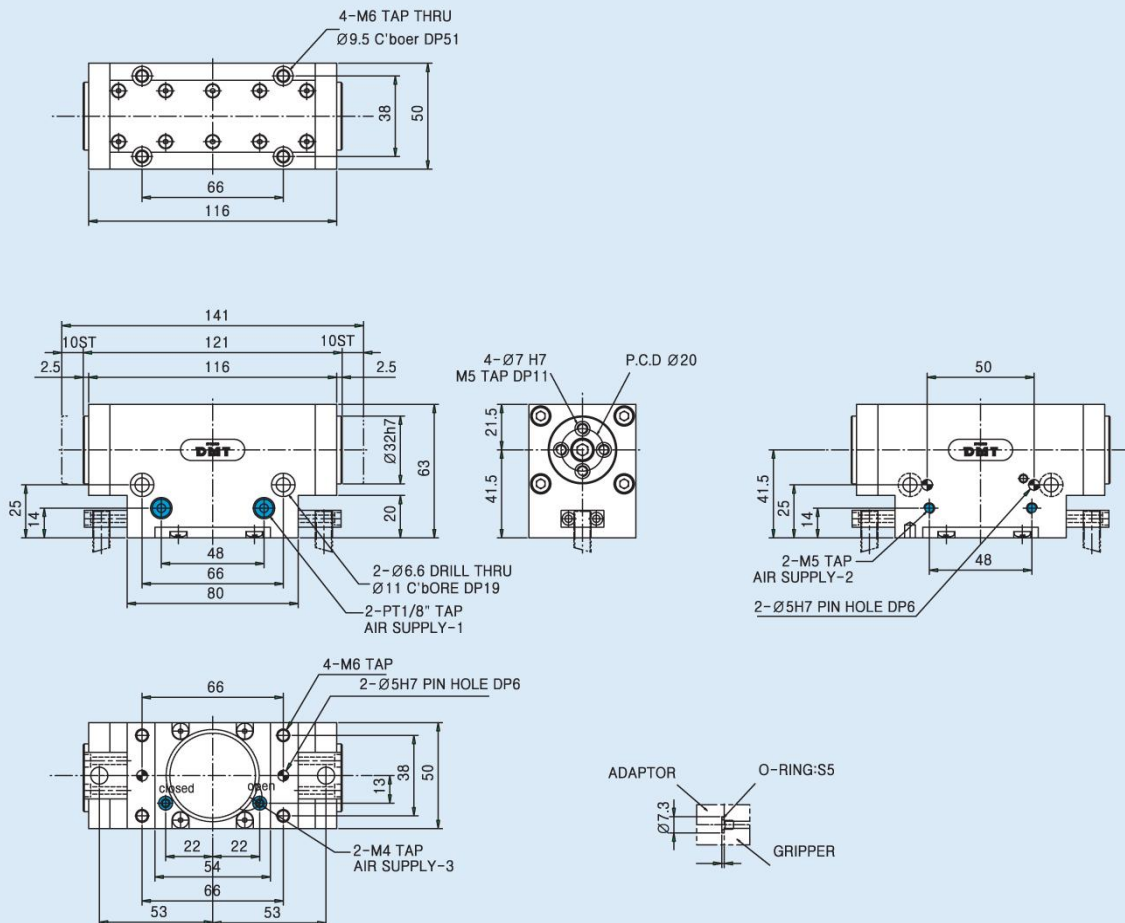
2PGS 125
2×13mm
820N

2-Finger-Parallel-Gripper 2PGS 100

Type	Stroke per finger	*Gripping force at 6 bars	*Workpiece weight (recom.)	Air consump. per doublestroke	Opening time	Closing time	Mass	Mass moment of inertia	Repeat ability	Max. Finger length
2PGS 100	10mm	430N	2kg	40cm ³	0.05s	0.05s	1.3kg	20kg cm ²	0.03mm	100mm

* Gripping force = arithmetic sum of the individual forces occurring at the fingers, distance "P" at 6 bars.

Dimension for 2PGS 100





2-Finger-Parallel-Grippers

2PGS 064
2 × 6mm
130N

2PGS 080
2 × 8mm
250N

2PGS 100
2 × 10mm
430N

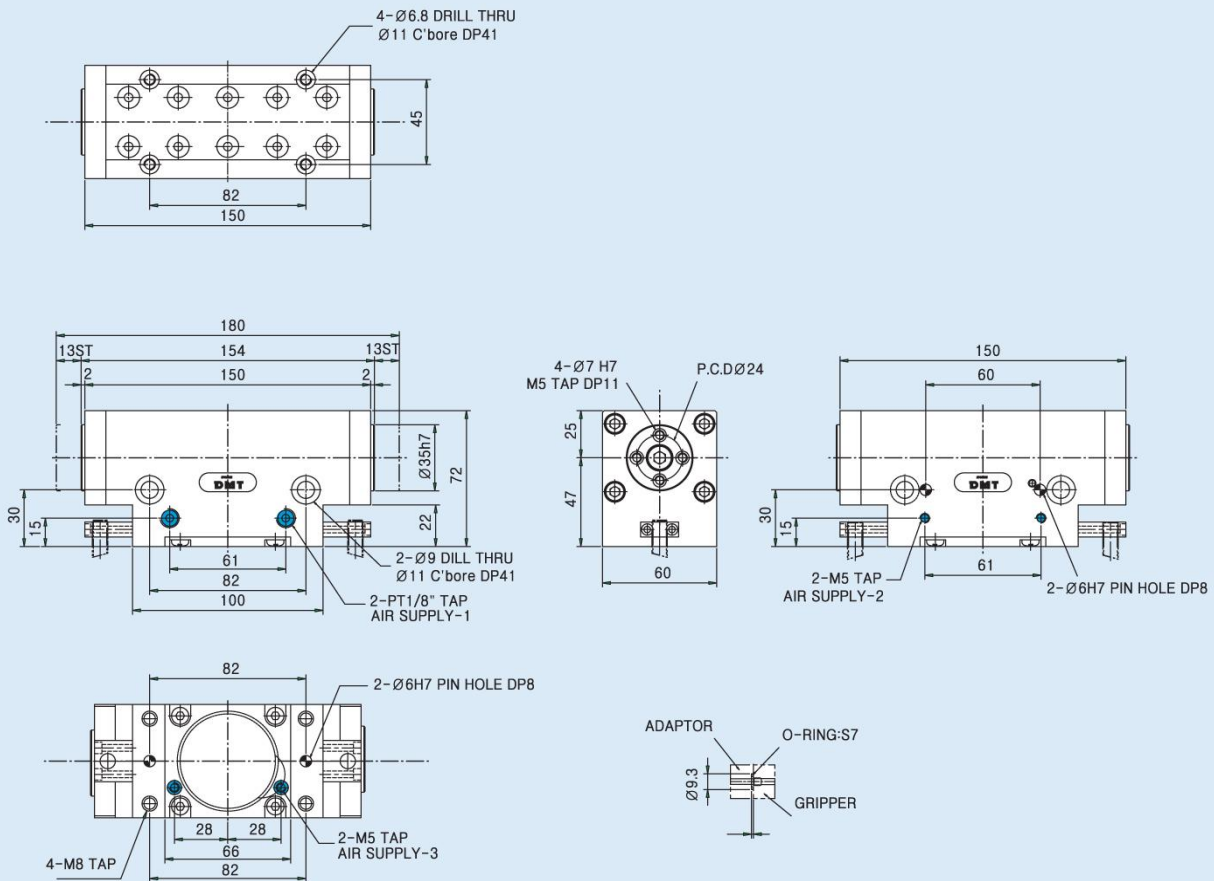
2PGS 125
2 × 13mm
820N

2-Finger-Parallel-Gripper 2PGS 125

Type	Stroke per finger	*Gripping force at 6 bars	*Workpiece weight (recom.)	Air consump. per doublestroke	Opening time	Closing time	Mass	Mass moment of inertia	Repeat ability	Max. Finger length
2PGS 125	13mm	820N	4kg	70cm ³	0.1s	0.1s	2.3kg	50kg cm ²	0.03mm	125mm

* Gripping force = arithmetic sum of the individual forces occurring at the fingers, distance "P" at 6 bars.

Dimension for 2PGS 125



2
F
I
N
G
E
R