

2PG2 080
2×8mm
666N

2PG2 100
2×10mm
1200N

2PG2 125
2×13mm
2060N

2PG2 160
2×16mm
4000N

2PG2 160AS
2×16mm
4800N

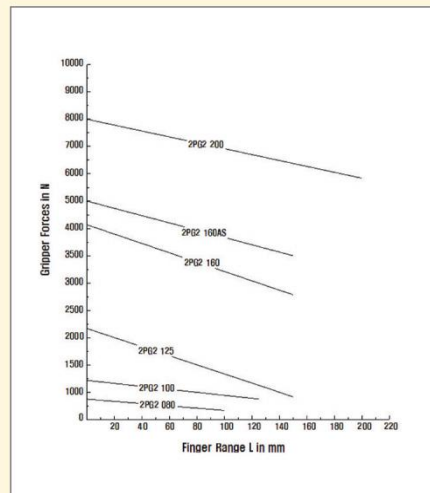
2PG2 200
2×16mm
8000N

2-Finger-Parallel-Gripper

TYPE : 2PG2



< Gripper의 최대 파지력과 모멘트 >



Distinction

- Compact Design
- Low Weight
- High Gripping Force(2× More)
- High Reliability and Long Life

- 소형, 경량 구조
- 높은 파지력(2×)
- 높은 신뢰성과 긴 수명

- ▶ Principle of operation : Over Wedges Mechanically Restricted Guidance, Transmission of Force Through Surfaces
- ▶ Material : Housing is Made of High-tensile Hard-coated Aluminium Alloy ; Functional Parts are Made of Hardened Steel
- ▶ Actuation : Pneumatic, Compressed Air Filtered(10μm), Dry or Lubricated
- ▶ Range of Operating Pressure : From 2 to 8Bars
- ▶ Operating Temperature : From 5℃~60℃(41°F to 140°F)
- ▶ Accessories : Proximity Switches.
Spring- packaged Pressure Plate

- ▶ 작동원리 : 쇄기형, 평형개폐형
- ▶ 재질 : AL(Hard-Coated) Hardened Steel
- ▶ 구동원 : Pneumatic
- ▶ 사용압력 : 2~8bars
- ▶ 사용온도 : 5℃~60℃
- ▶ 압력 Plate 부착 가능



2-Finger-Parallel-Grippers

2PG2 080
2×8mm
3800N

2PG2 100
2×10mm
1200N

2PG2 125
2×13mm
2060N

2PG2 160
2×16mm
4000N

2PG2 160AS
2×16mm
4800N

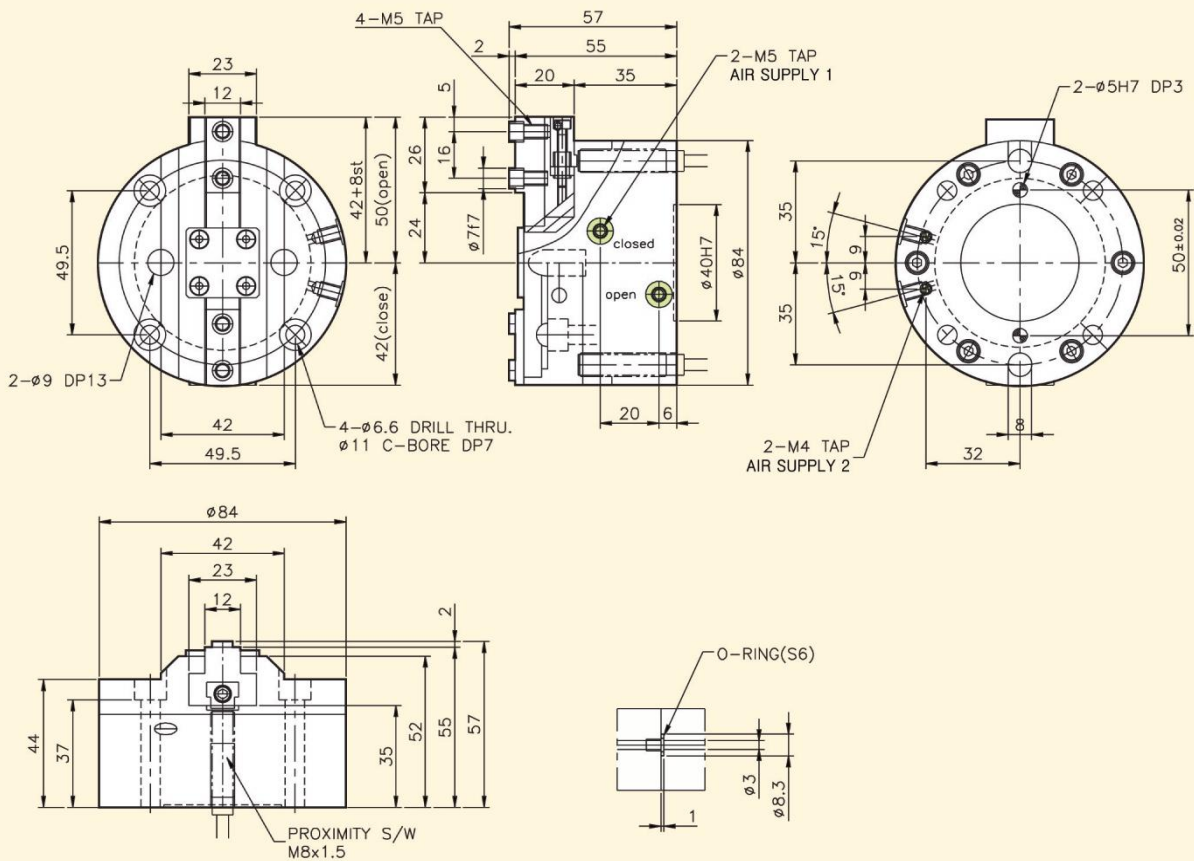
2PG2 200
2×16mm
8000N

2-Finger-Parallel-Gripper 2PG2 080

Type	Stroke per finger	*Gripping force at 6 bars	*Workpiece weight (recom.)	Air consump. per doublestroke	Opening time	Closing time	Mass	Mass moment of inertia	Repeat ability	Max. Finger length
2PG2 080	8mm	666N	3.3kg	60cm ³	0.05s	0.06s	0.72kg	19kg cm ³	0.01mm	80mm

* Gripping force = arithmetic sum of the individual forces occurring at the fingers, distance "P" at 6 bars.

Dimension for 2PG2 080



2
F
I
N
G
E
R



2-Finger-Parallel-Grippers

2PG2 080
2×8mm
3800N

2PG2 100
2×10mm
1200N

2PG2 125
2×13mm
2060N

2PG2 160
2×16mm
4000N

2PG2 160AS
2×16mm
4800N

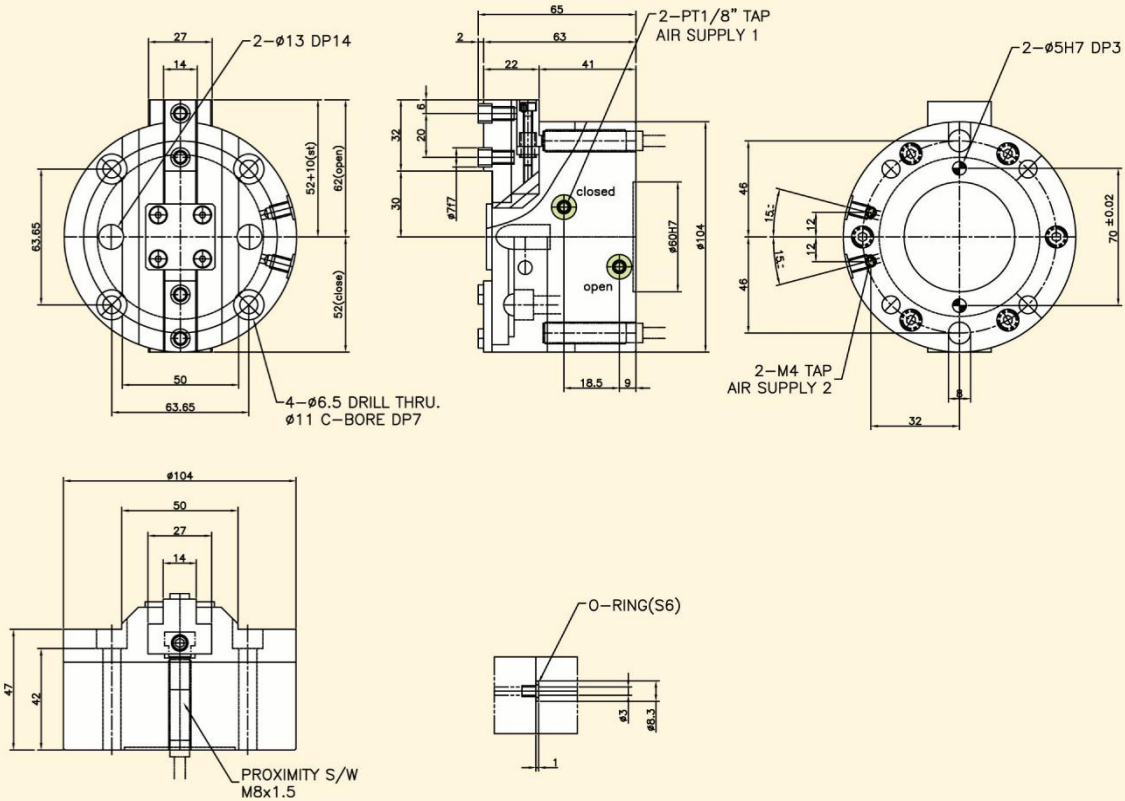
2PG2 200
2×20mm
8000N

2-Finger-Parallel-Gripper 2PG2 100

Type	Stroke per finger	*Gripping force at 6 bars	*Workpiece weight (recom.)	Air consump. per doublestroke	Opening time	Closing time	Mass	Mass moment of inertia	Repeat ability	Max. Finger length
2PG2 100	10mm	1200N	6kg	120cm ³	0.07s	0.08s	1.2kg	41kg cm ³	0.01mm	100mm

* Gripping force = arithmetic sum of the individual forces occurring at the fingers, distance "P" at 6 bars.

Dimension for 2PG2 100





2-Finger-Parallel-Grippers

2PG2 080
2×8mm
3800N

2PG2 100
2×10mm
1200N

2PG2 125
2×13mm
2060N

2PG2 160
2×16mm
4000N

2PG2 160AS
2×16mm
4800N

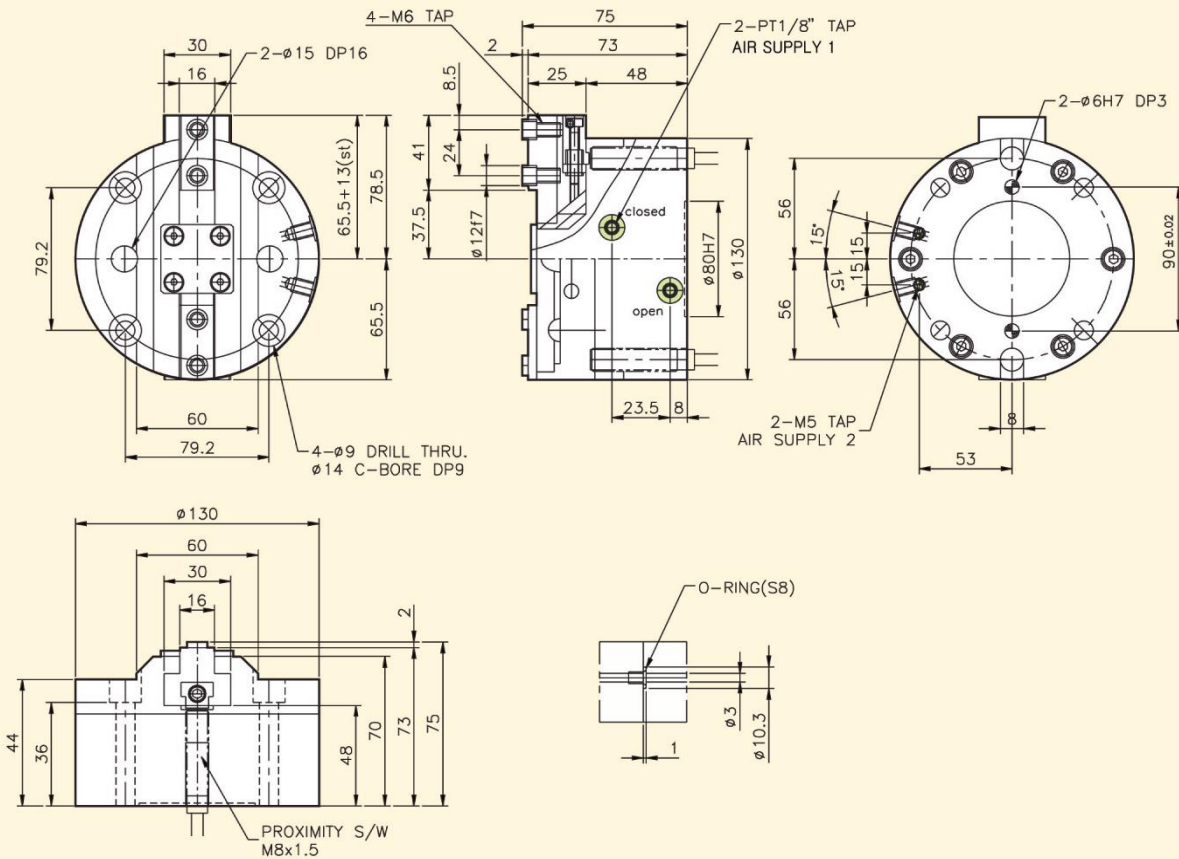
2PG2 200
2×20mm
8000N

2-Finger-Parallel-Gripper 2PG2 125

Type	Stroke per finger	*Gripping force at 6 bars	*Workpiece weight (recom.)	Air consump. per doublestroke	Opening time	Closing time	Mass	Mass moment of inertia	Repeat ability	Max. Finger length
2PG2 125	13mm	2060N	10.3kg	230cm ³	0.17s	0.17s	2.04kg	97kg cm ³	0.05mm	125mm

* Gripping force = arithmetic sum of the individual forces occurring at the fingers, distance "P" at 6 bars.

Dimension for 2PG2 125



2
F
I
N
G
E
R

2PG2 080
2×8mm
3800N

2PG2 100
2×10mm
1200N

2PG2 125
2×13mm
2060N

2PG2 160
2×16mm
4000N

2PG2 160AS
2×16mm
4800N

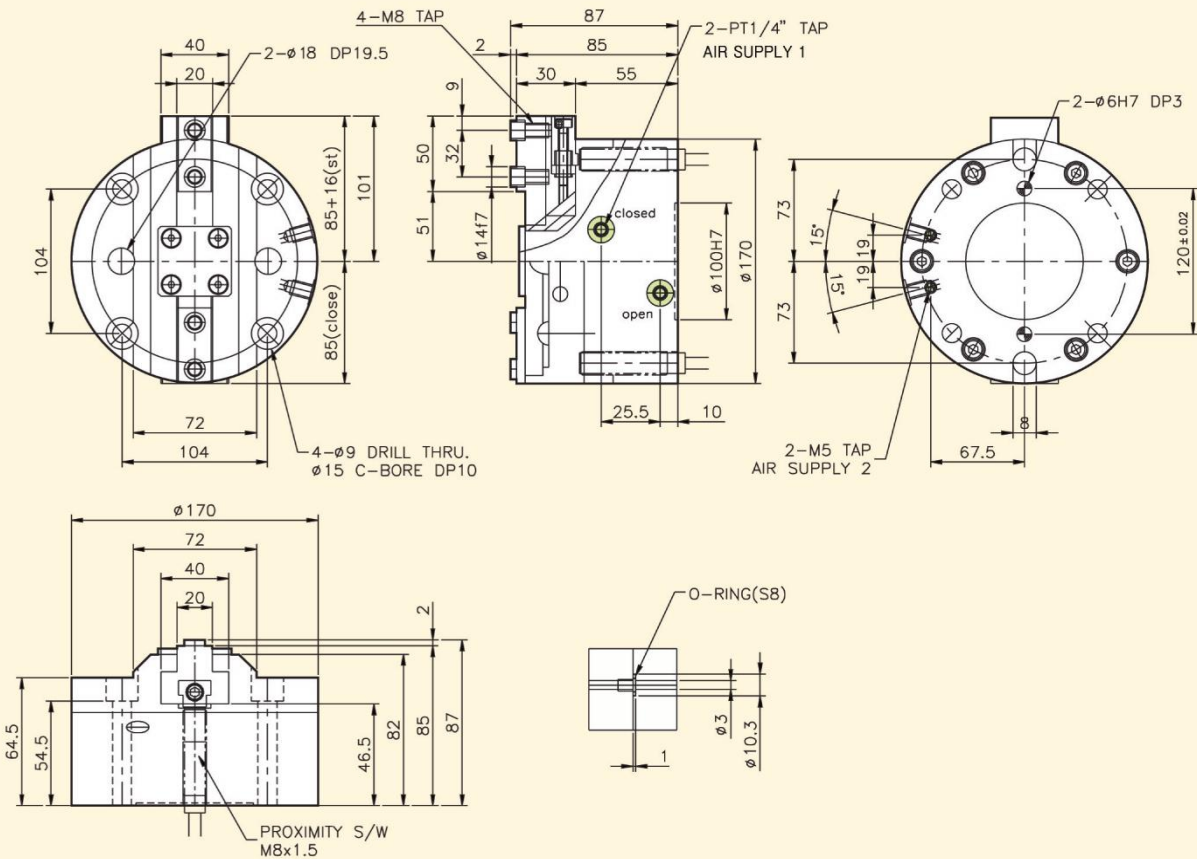
2PG2 200
2×20mm
8000N

2-Finger-Parallel-Gripper 2PG2 160

Type	Stroke per finger	*Gripping force at 6 bars	*Workpiece weight (recom.)	Air consump. per doublestroke	Opening time	Closing time	Mass	Mass moment of inertia	Repeat ability	Max. Finger length
2PG2 160	16mm	4000N	20kg	520cm ³	0.4s	0.4s	4.2kg	253kg cm ³	0.05mm	160mm

* Gripping force = arithmetic sum of the individual forces occurring at the fingers, distance "P" at 6 bars.

Dimension for 2PG2 160





2-Finger-Parallel-Grippers

2PG2 080
2×8mm
3800N

2PG2 100
2×10mm
1200N

2PG2 125
2×13mm
2060N

2PG2 160
2×16mm
4000N

2PG2 160AS
2×16mm
4800N

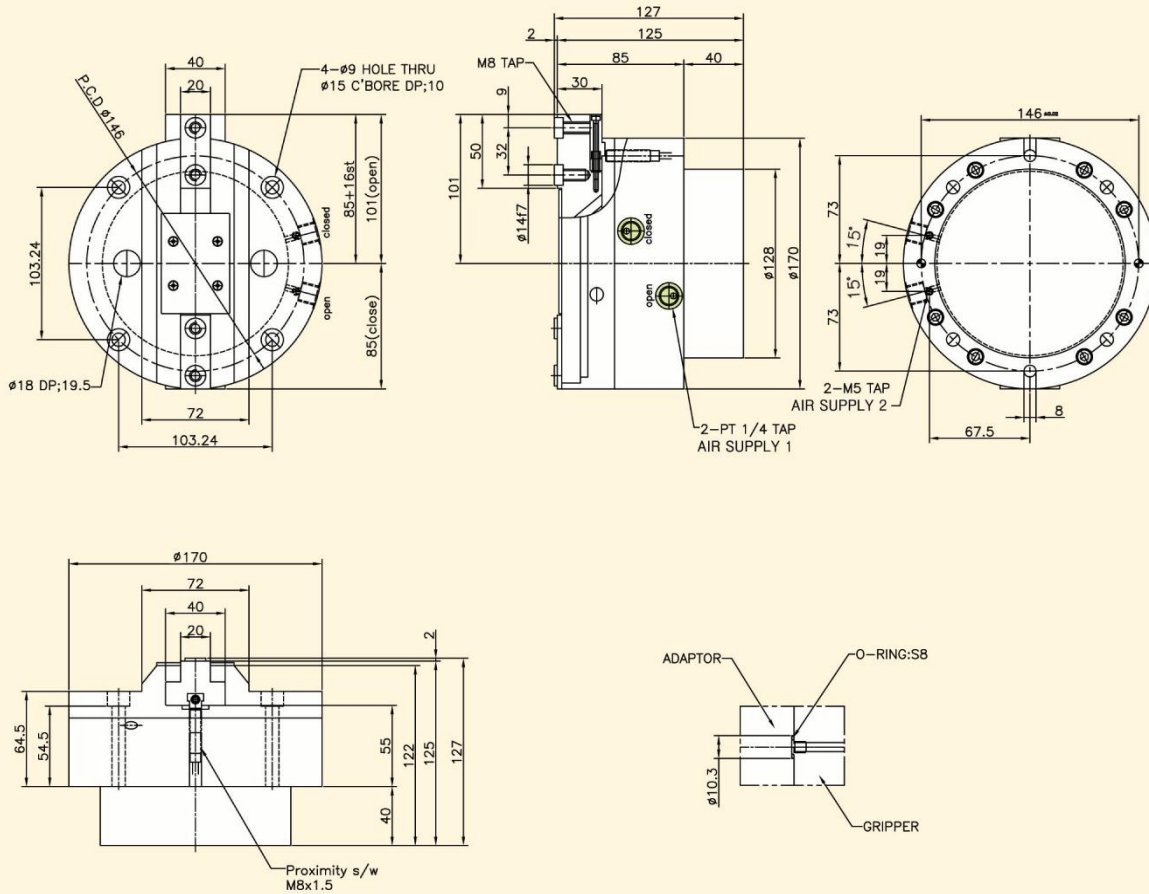
2PG2 200
2×20mm
8000N

2-Finger-Parallel-Gripper 2PG2 160AS

Type	Stroke per finger	*Gripping force at 6 bars	*Workpiece weight (recom.)	Air consump. per doublestroke	Opening time	Closing time	Mass	Mass moment of inertia	Repeat ability	Max. Finger length
2PG2 160AS	16mm	4800N	20kg	520cm ³	0.4s	0.4s	5.9kg	253kg cm ³	0.05mm	160mm

* Gripping force = arithmetic sum of the individual forces occurring at the fingers, distance "P" at 6 bars.

Dimension for 2PG2 160AS



2
F
I
N
G
E
R

2-Finger-Parallel-Grippers

2PG2 080
2×8mm
3800N

2PG2 100
2×10mm
1200N

2PG2 125
2×13mm
2060N

2PG2 160
2×16mm
4000N

2PG2 160AS
2×16mm
4800N

2PG2 200
2×20mm
8000N

2-Finger-Parallel-Gripper 2PG2 200

Type	Stroke per finger	*Gripping force at 6 bars	*Workpiece weight (recom.)	Air consump. per doublestroke	Opening time	Closing time	Mass	Mass moment of inertia	Repeat ability	Max. Finger length
2PG2 200	20mm	8000N	39kg	1400cm ³	1.3s	1.3s	7.2kg	700kg cm ³	0.05mm	200mm

* Gripping force = arithmetic sum of the individual forces occurring at the fingers, distance "P" at 6 bars.

Dimension for 2PG2 200

