

**2AG025**  
2 × 20°  
217N

**2AG040**  
2 × 20°  
584N

**2AG060**  
2 × 20°  
1290N

**2AG080**  
2 × 20°  
2490N

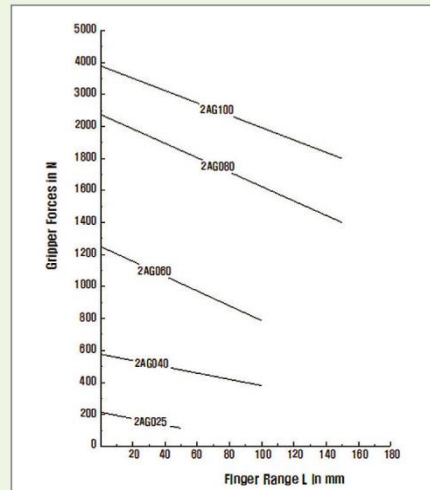
**2AG100**  
2 × 20°  
3955N

## 2-Finger-Angular-Gripper

TYPE : 2AG



< Gripper의 최대 파지력과 모멘트 >



## Distinction

- 40° opening angle
- Small, Compact design
- Centric grippers for O.D. gripping
- Strong gripping force
- Excellent repeatability
- Very reliable
- Stroke monitoring Using proximity switch

- 동작 범위 40°
- 소형, 경량 구조
- 외경 중심 파지 형식
- 강한 파지력
- 우수한 반복성
- 높은 신뢰성
- 근접 Sensor를 이용한 Stroke 감지

- ▶ Operating principle : force guided toggle drive system
- ▶ Material : housing is made of high-tensile, hard-coated aluminium alloy ; functional parts are hardened steel
- ▶ Operating : pneumatic
- ▶ Operating pressure range : 4.5 to 8 bars
- ▶ Installation : in various position
- ▶ Parts supplied : brackets for proximity switch, position pin O-ring

- ▶ 작동원리 : 토글 이음새를 이용한 힘의 전달 방식
- ▶ 재질 : 몸체 AL(Hard-Coated)  
작동부위 Hardened Steel
- ▶ 구동원 : 공기압
- ▶ 사용압력 : 4.5~8bars
- ▶ 설치 : 다양한 위치 설치 가능
- ▶ 공급부품 : 센서 고정판, 위치 고정 Pin O-ring

**2AG 025**  
2×20°  
217N

**2AG 040**  
2×20°  
584N

**2AG 060**  
2×20°  
1290N

**2AG 080**  
2×20°  
2490N

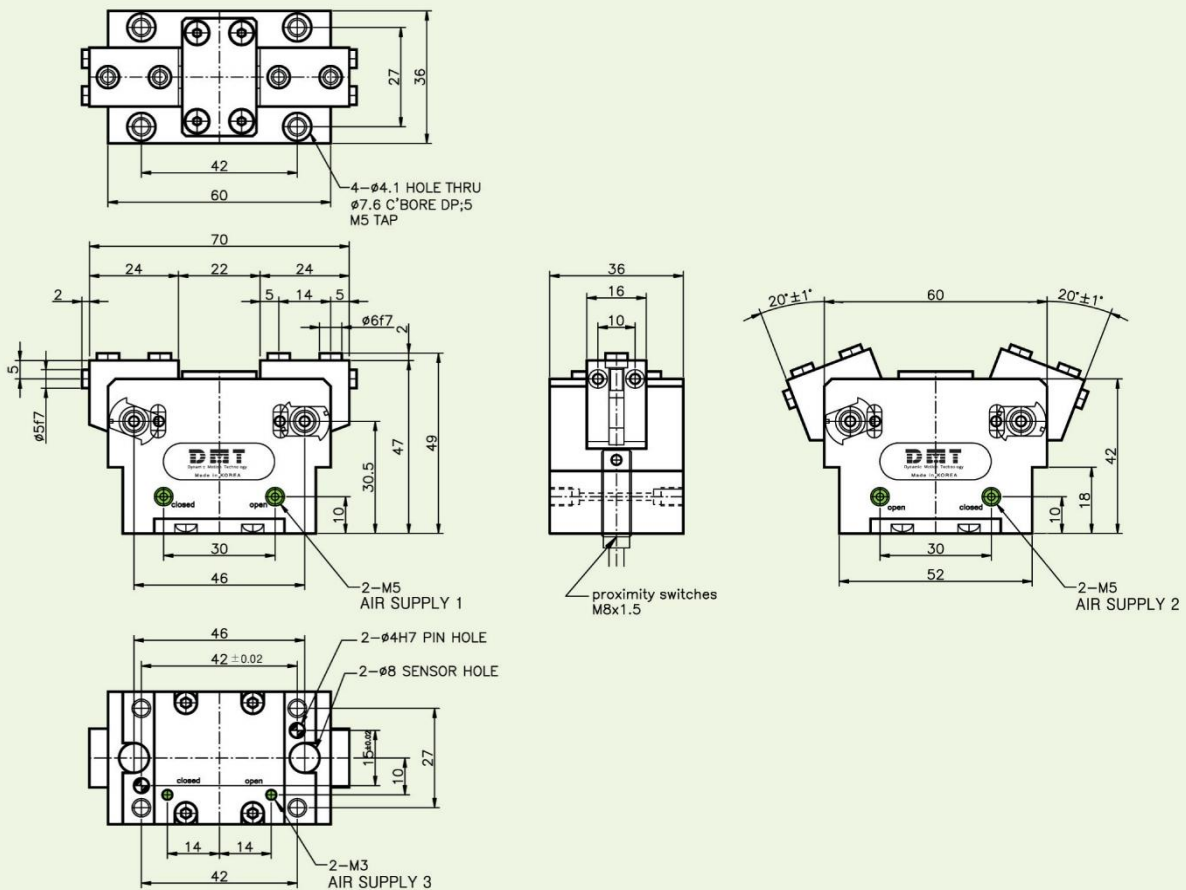
**2AG 100**  
2×20°  
3955N

## 2-Finger-Angle-Grippers 2AG 025

Type	Opening angle per finger	*Gripping force at 6 bars	*Workpiece weight (recom.)	Air consump. per doublestroke	Opening time	Closing time	Mass	Mass moment of inertia	Repeat ability	Max. Finger length
2AG 025	20°	217N	1.1kg	7.5cm <sup>3</sup>	0.04s	0.02s	0.3kg	1.2kg cm <sup>3</sup>	0.05mm	40mm

\* Gripping force = arithmetic sum of the individual forces occurring at the fingers, distance "P" at 6 bars.

### Dimension for 2AG 025





# 2-Finger-Angle-Grippers

**2AG 025**  
2×20°  
217N

**2AG 040**  
2×20°  
584N

**2AG 060**  
2×20°  
1290N

**2AG 080**  
2×20°  
2490N

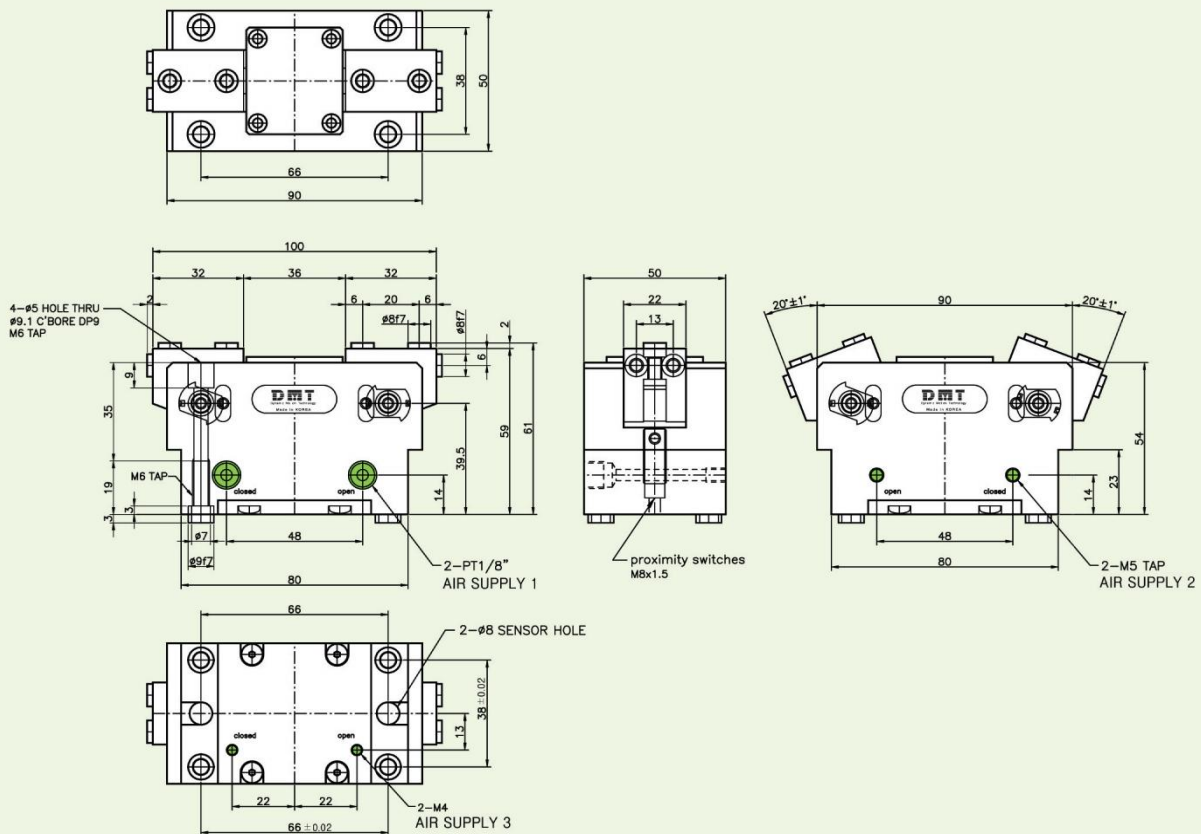
**2AG 100**  
2×20°  
3955N

## 2-Finger-Angle-Grippers 2AG 040

Type	Opening angle per finger	*Gripping force at 6 bars	*Workpiece weight (recom.)	Air consump. per doublestroke	Opening time	Closing time	Mass	Mass moment of inertia	Repeat ability	Max. Finger length
2AG 040	20°	584N	2.9kg	22cm <sup>3</sup>	0.1s	0.05s	0.74kg	7.5kg cm <sup>3</sup>	0.05mm	60mm

\* Gripping force = arithmetic sum of the individual forces occurring at the fingers, distance "P" at 6 bars.

### Dimension for 2AG 040



2 FINGER

# 2-Finger-Angle-Grippers

**2AG 025**  
2 × 20°  
217N

**2AG 040**  
2 × 20°  
584N

**2AG 060**  
2 × 20°  
1290N

**2AG 080**  
2 × 20°  
2490N

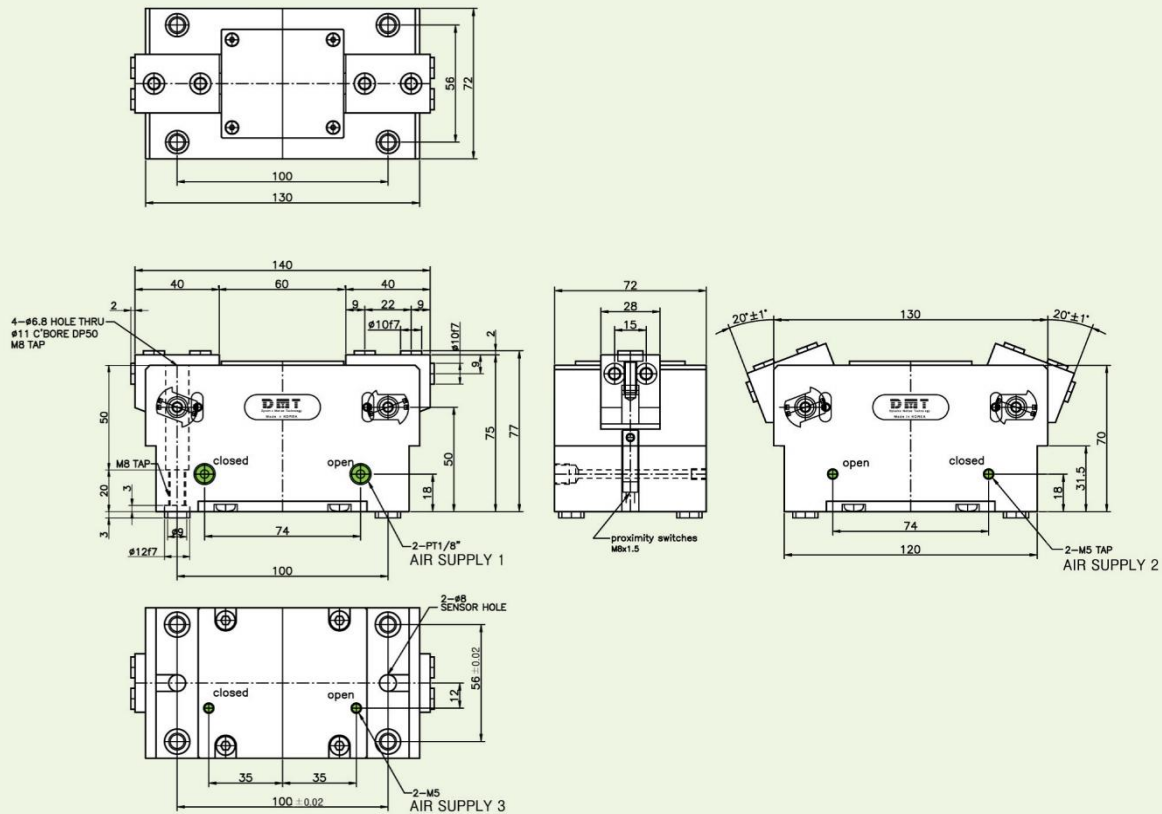
**2AG 100**  
2 × 20°  
3955N

## 2-Finger-Angle-Grippers 2AG 060

Type	Opening angle per finger	*Gripping force at 6 bars	*Workpiece weight (recom.)	Air consump. per doublestroke	Opening time	Closing time	Mass	Mass moment of inertia	Repeat ability	Max. Finger length
2AG 060	20°	1290N	6.4kg	65cm <sup>3</sup>	0.3s	0.2s	1.8kg	25kg cm <sup>3</sup>	0.05mm	80mm

\* Gripping force = arithmetic sum of the individual forces occurring at the fingers, distance "P" at 6 bars.

### Dimension for 2AG 060





# 2-Finger-Angle-Grippers

**2AG 025**  
2×20°  
217N

**2AG 040**  
2×20°  
584N

**2AG 060**  
2×20°  
1290N

**2AG 080**  
2×20°  
2490N

**2AG 100**  
2×20°  
3955N

## 2-Finger-Angle-Grippers 2AG 100

Type	Opening angle per finger	*Gripping force at 6 bars	*Workpiece weight (recom.)	Air consump. per doublestroke	Opening time	Closing time	Mass	Mass moment of inertia	Repeat ability	Max. Finger length
2AG 100	20°	3955N	19.5kg	345cm <sup>3</sup>	0.5s	0.2s	8.5kg	400kg cm <sup>3</sup>	0.05mm	200mm

\* Gripping force = arithmetic sum of the individual forces occurring at the fingers, distance "P" at 6 bars.

### Dimension For 2AG 100

